

Tama County, Iowa
Iowa North Zone (1401)
Horiz. Datum: NAD83(NSRS2007)
Vert. Datum: NAVD 1988
US Survey Feet
2007

Point Name: **1042**

Designation: 2003-001 BENTON CO (set by DCI in 2003)

Northing: **3431324.53**sft Easting: **5249559.70**sft

Orthometric Height: **786.53**sft Ellipsoid Height: **682.50**sft **Geoid03**

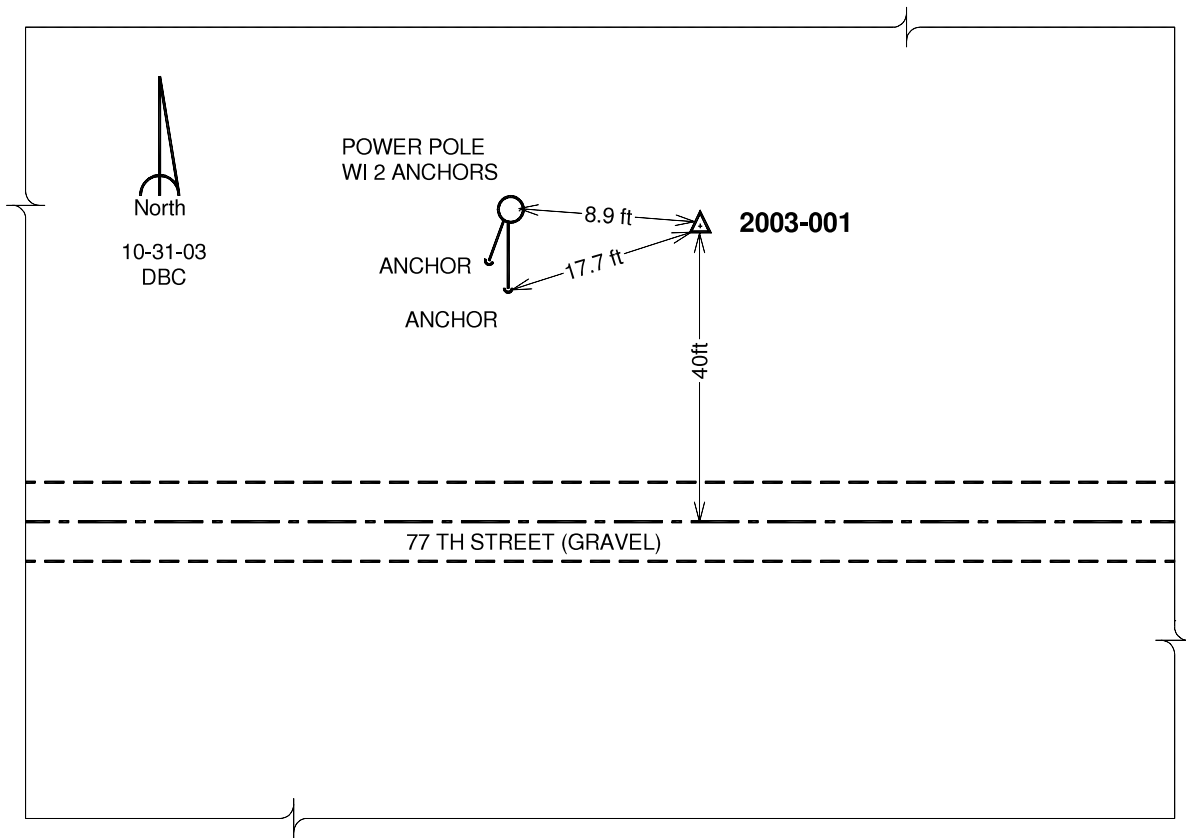
Latitude: **41°54'23.49956"N**

Longitude: **92°17'38.18366"W**

Mapping Angle: **0°49'03"**

Combination Scale Factor: **1.00000035**

Monument Type: Berntsen Top Security Rod Monument with a 2-1/2" dia. domed survey cap and permanent magnet encased in a 5" dia. PVC pipe with a NGS style aluminum access cover.



This document was prepared by DCI and GBC for use by Tama County, Iowa.