

Tama County, Iowa
Iowa North Zone (1401)
Horiz. Datum: NAD83(NSRS2007)
Vert. Datum: NAVD 1988
US Survey Feet
2007

Point Name: **11**

Designation: 2007-011 Tama Co GPS Control Pt

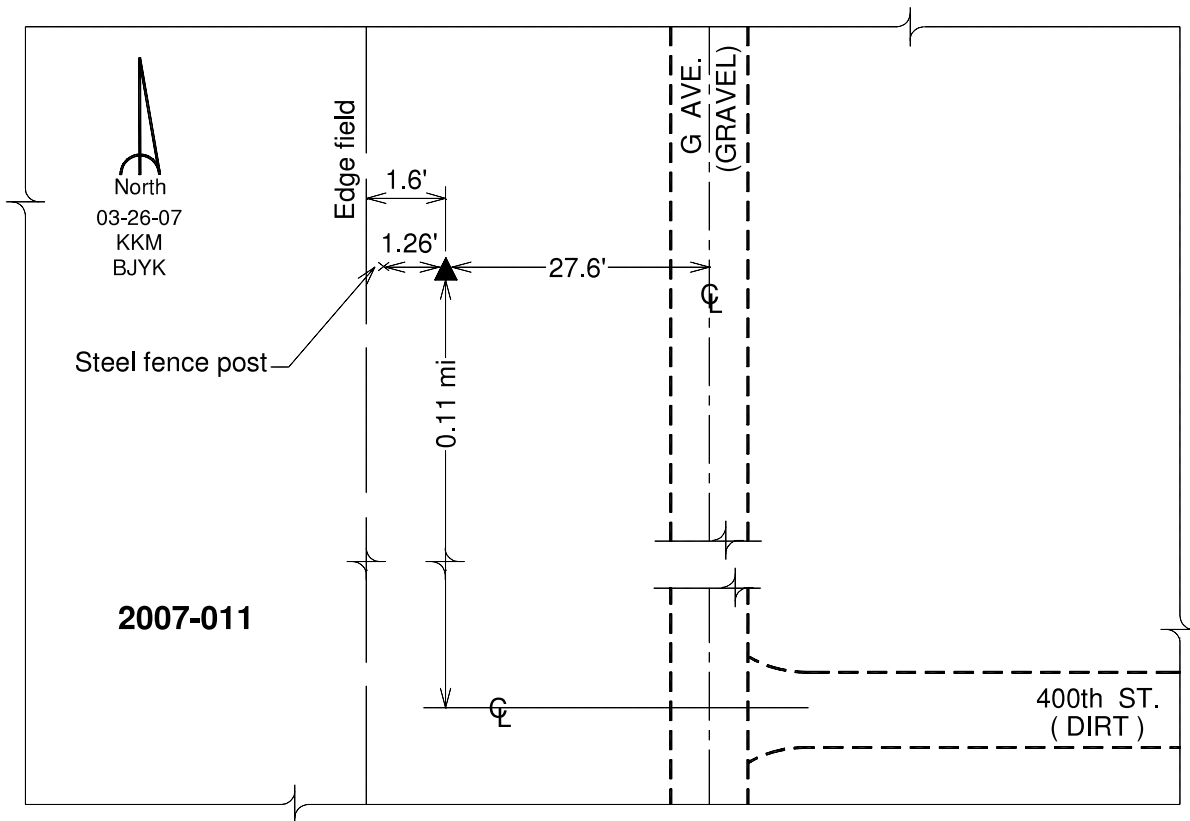
Northing: **3414626.45**sft Easting: **5152872.39**sft

Orthometric Height: **993.66**sft Ellipsoid Height: **889.21**sft **Geoid03**

Latitude: **41°51'50.17197"N** Longitude: **92°38'58.96663"W**

Mapping Angle: **0°34'35"** Combination Scale Factor: **1.00000054**

Monument Type: Berntsen 3/4" Top Security Rod Monument with a 2-1/2" dia. domed survey cap and permanent magnet encased in a white PVC pipe with a NGS style alum. access cover.



This document was prepared by DCI and GBC for use by Tama County, Iowa.