

Tama County, Iowa
 Iowa North Zone (1401)
 Horiz. Datum: NAD83(NSRS2007)
 Vert. Datum: NAVD 1988
 US Survey Feet
2007

Point Name: **1174**

Designation: 2006-174 BLACK HAWK CO (set by BHC Engr's Dept. in 2006)

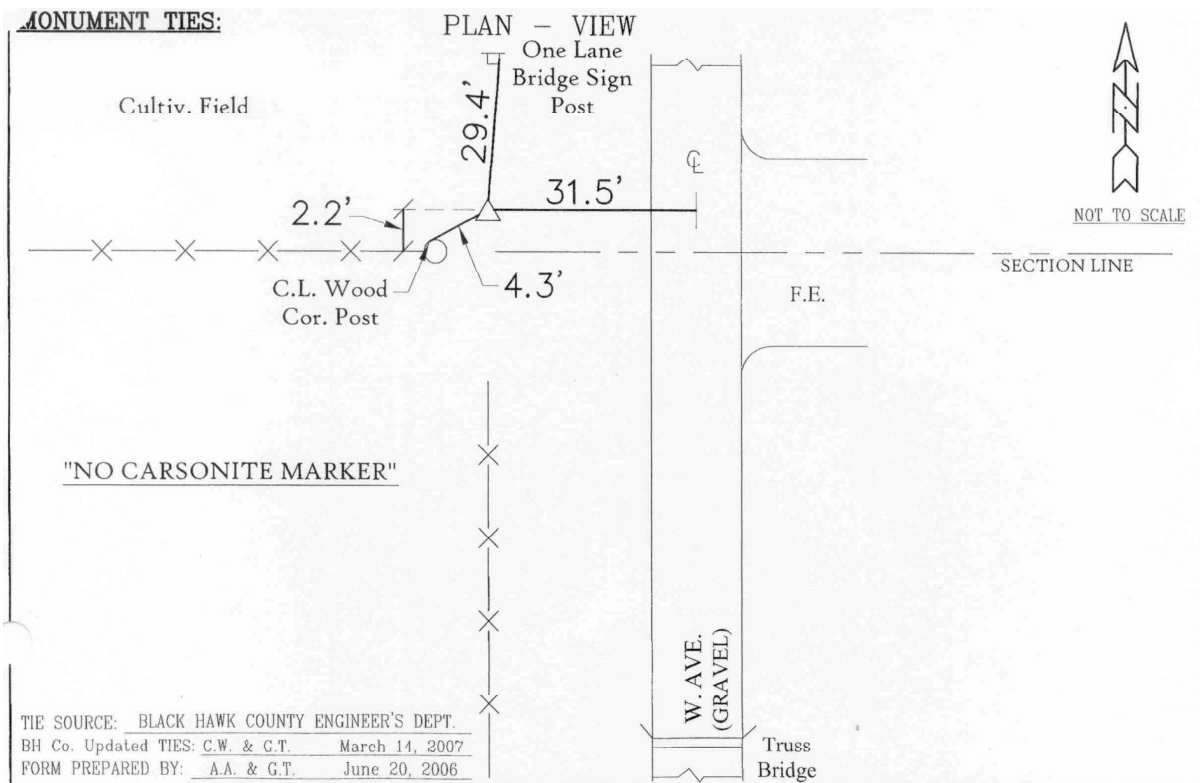
Northing: **3557882.61**sft Easting: **5235808.21**sft

Orthometric Height: **850.38**sft Ellipsoid Height: **747.79**sft **Geoid03**

Latitude: **42°15'15.51816"N** Longitude: **92°20'17.01798"W**

Mapping Angle: **0°47'15"** Combination Scale Factor: **0.99993556**

Monument Type: Berntsen 3/4" Fluted "Top Security" rod (6ft long) & 2-1/2" Aluminum Cap stamped "2006-174" with NGS style access cover.



This document was prepared by DCI and GBC for use by Tama County, Iowa.