

Tama County, Iowa
 Iowa North Zone (1401)
 Horiz. Datum: NAD83(NSRS2007)
 Vert. Datum: NAVD 1988
 US Survey Feet
2007

Point Name: **13**

Designation: 2007-013 Tama Co GPS Control Pt

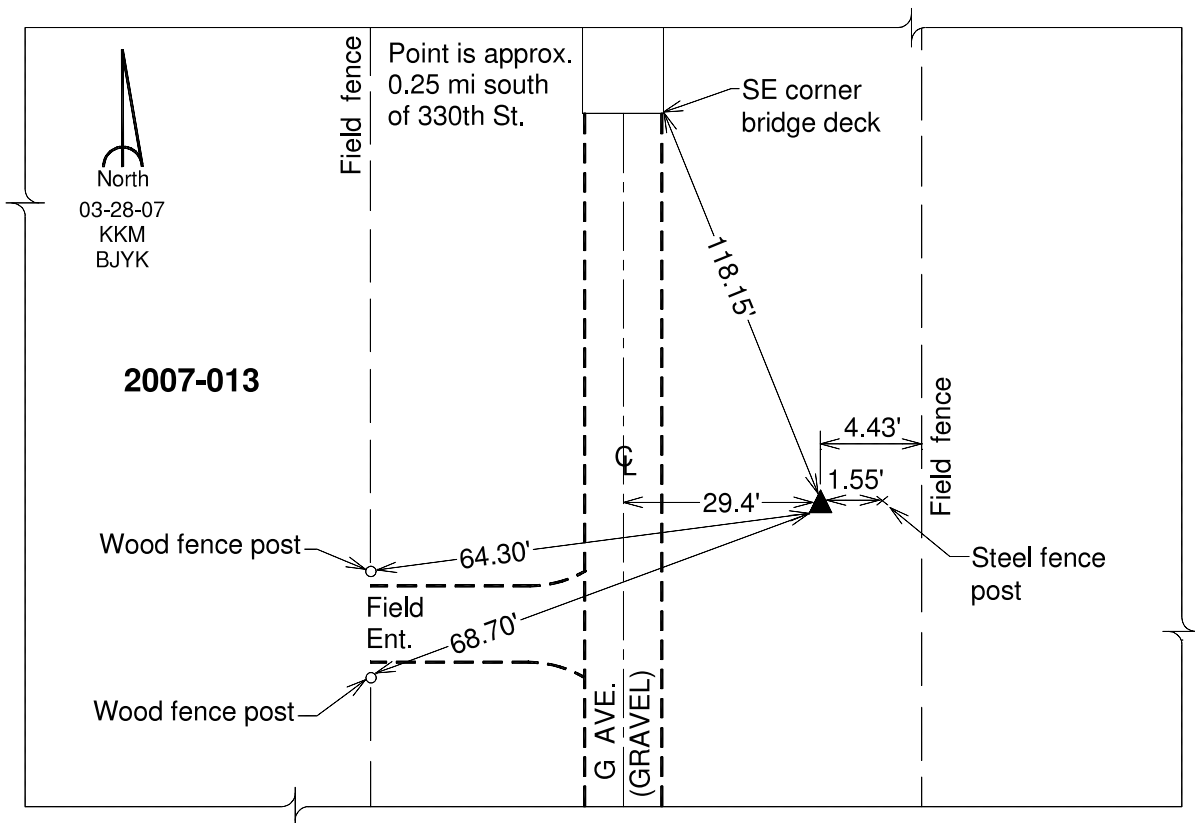
Northing: **3446891.18**sft Easting: **5152705.53**sft

Orthometric Height: **836.39**sft Ellipsoid Height: **732.15**sft **Geoid03**

Latitude: **41°57'08.90736"N** Longitude: **92°38'56.88021"W**

Mapping Angle: **0°34'36"** Combination Scale Factor: **0.99998775**

Monument Type: Berntsen 3/4" Top Security Rod Monument with a 2-1/2" dia. domed survey cap and permanent magnet encased in a white PVC pipe with a NGS style alum. access cover.



This document was prepared by DCI and GBC for use by Tama County, Iowa.