

Tama County, Iowa
Iowa North Zone (1401)
Horiz. Datum: NAD83(NSRS2007)
Vert. Datum: NAVD 1988
US Survey Feet
2007

Point Name: **14**

Designation: 2000-030 GPS Control Pt. (set by ASI in 2000)

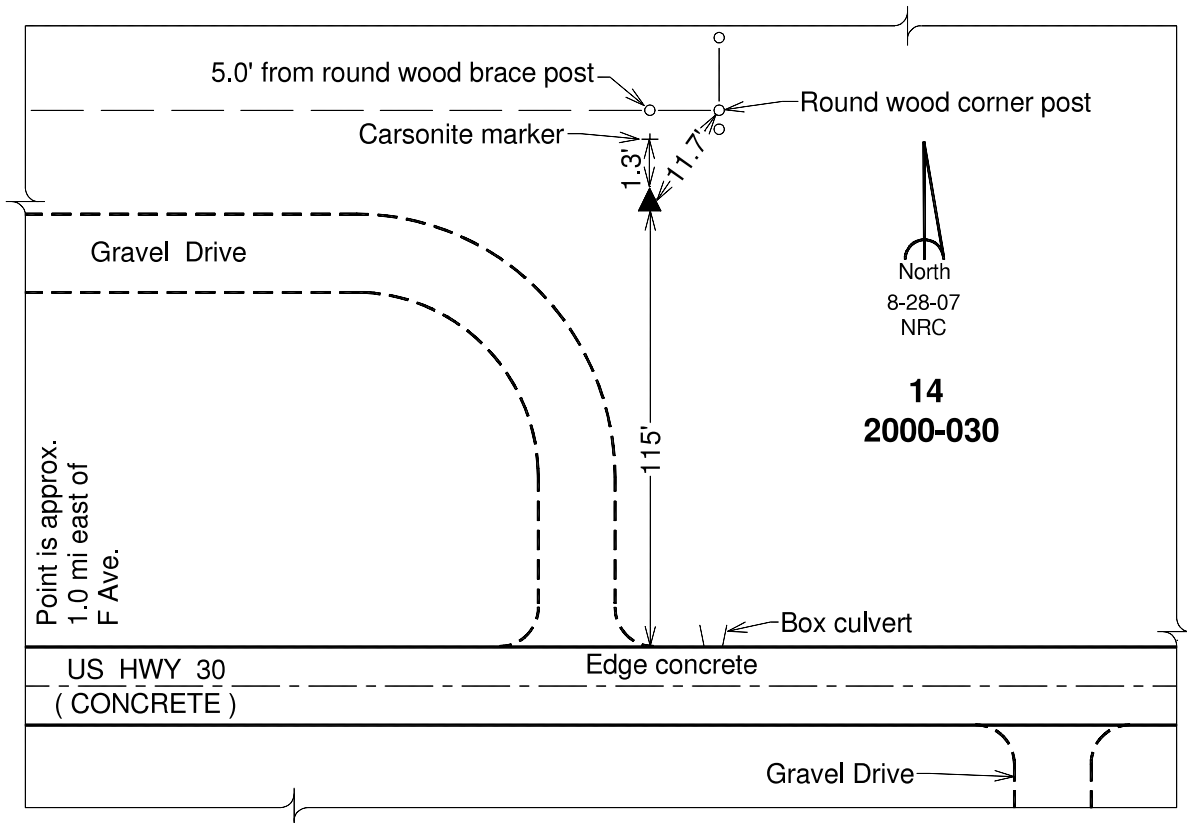
Northing: **3463620.35**sft Easting: **5152347.84**sft

Orthometric Height: **971.02**sft Ellipsoid Height: **866.91**sft **Geoid03**

Latitude: **41°59'54.19814"N** Longitude: **92°38'59.38724"W**

Mapping Angle: **0°34'34"** Combination Scale Factor: **0.99997173**

Monument Type: 5/8" dia. driven aluminum rod with a 2-1/2" dia aluminum cap and permanent magnet encased in a 5" dia. PVC pipe with an aluminum access cover.



This document was prepared by DCI and GBC for use by Tama County, Iowa.