

**Tama County, Iowa**  
 Iowa North Zone (1401)  
 Horiz. Datum: NAD83(NSRS2007)  
 Vert. Datum: NAVD 1988  
 US Survey Feet  
**2007**

Point Name: **15**

**Designation:** 2007-015 Tama Co GPS Control Pt

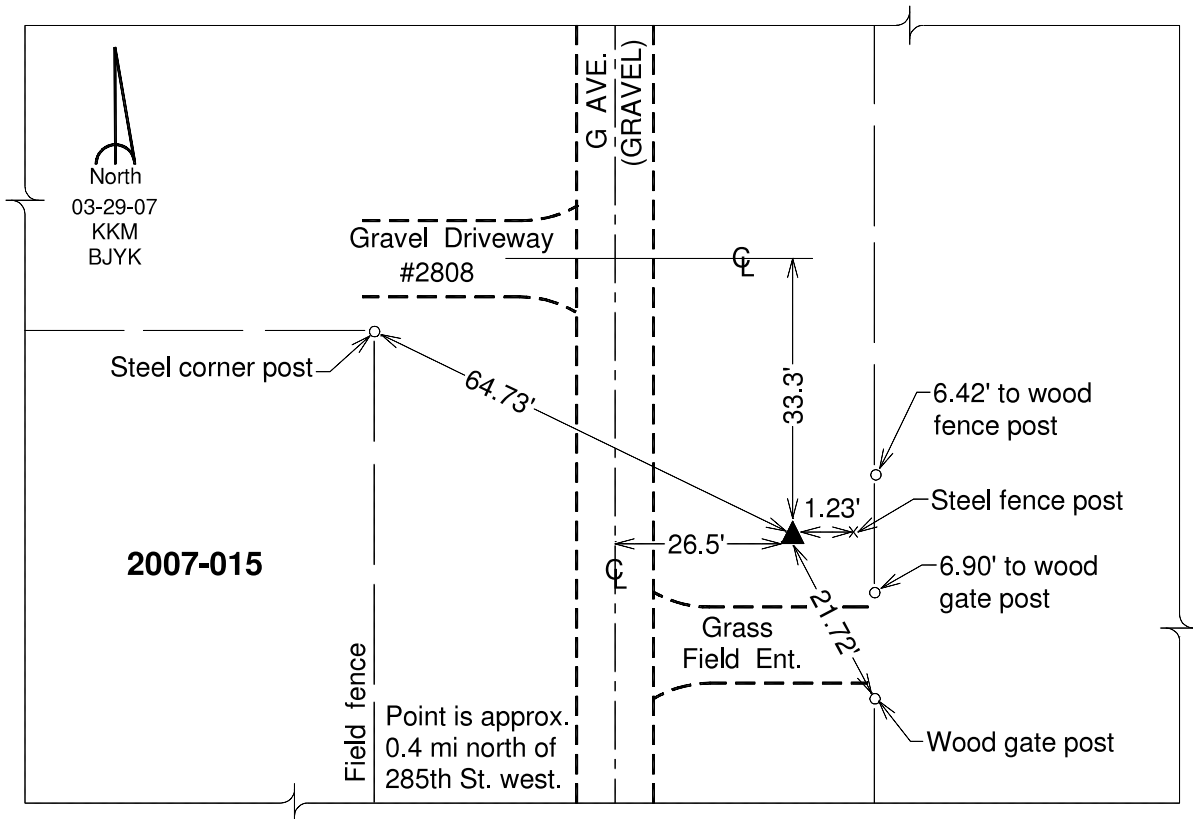
Northing: **3476674.45**sft Easting: **5152300.12**sft

Orthometric Height: **1018.34**sft Ellipsoid Height: **914.32**sft **Geoid03**

Latitude: **42°02'03.15494"N** Longitude: **92°38'58.28002"W**

Mapping Angle: **0°34'35"** Combination Scale Factor: **0.99996242**

**Monument Type:** Berntsen 3/4" Top Security Rod Monument with a 2-1/2" dia. domed survey cap and permanent magnet encased in a white PVC pipe with a NGS style alum. access cover.



*This document was prepared by DCI and GBC for use by Tama County, Iowa.*