

**Tama County, Iowa**  
 Iowa North Zone (1401)  
 Horiz. Datum: NAD83(NSRS2007)  
 Vert. Datum: NAVD 1988  
 US Survey Feet  
**2007**

Point Name: **16**

**Designation:** 2007-016 Tama Co GPS Control Pt

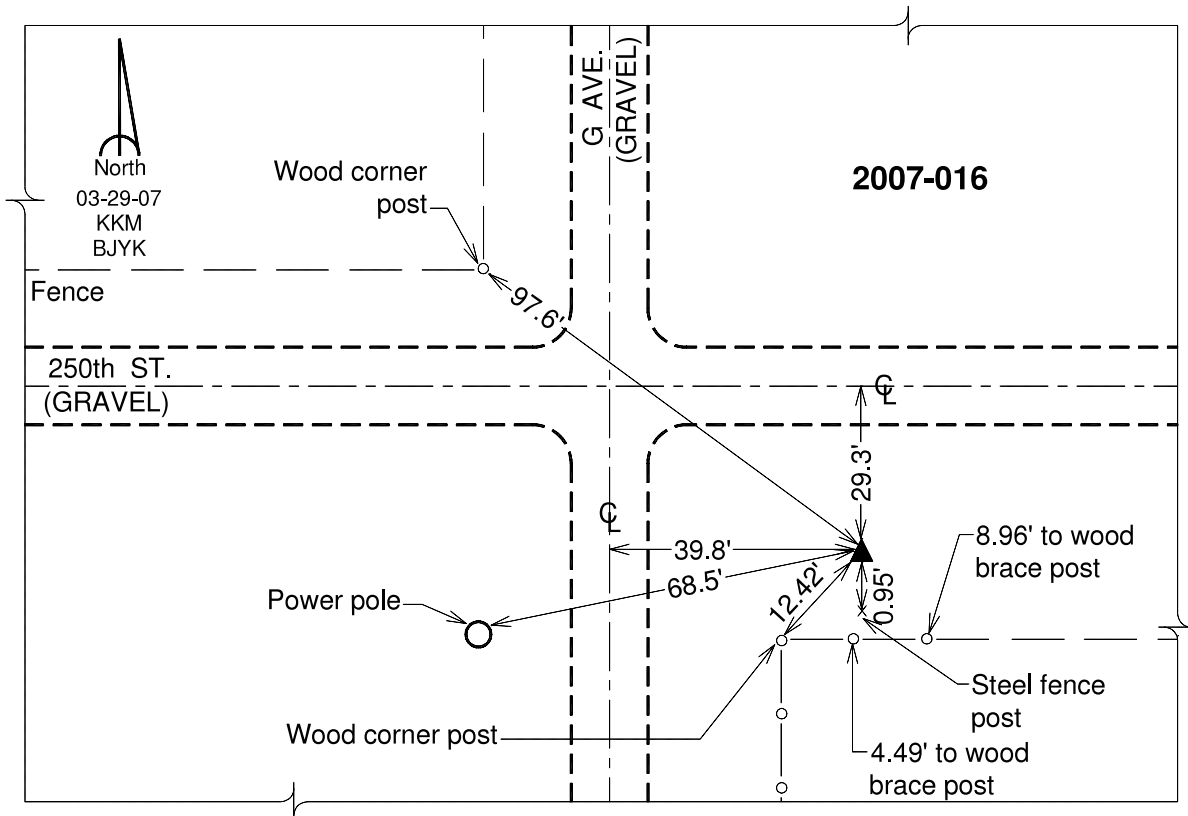
Northing: **3492918.58**sft Easting: **5152119.90**sft

Orthometric Height: **940.02**sft Ellipsoid Height: **836.08**sft **Geoid03**

Latitude: **42°04'43.63696"N** Longitude: **92°38'58.50273"W**

Mapping Angle: **0°34'35"** Combination Scale Factor: **0.99995793**

**Monument Type:** Berntsen 3/4" Top Security Rod Monument with a 2-1/2" dia. domed survey cap and permanent magnet encased in a white PVC pipe with a NGS style alum. access cover.



*This document was prepared by DCI and GBC for use by Tama County, Iowa.*