

**Tama County, Iowa**  
 Iowa North Zone (1401)  
 Horiz. Datum: NAD83(NSRS2007)  
 Vert. Datum: NAVD 1988  
 US Survey Feet  
**2007**

Point Name: **17**

**Designation:** 2007-017 Tama Co GPS Control Pt

Northing: **3509730.17**sft Easting: **5151881.01**sft

Orthometric Height: **1011.32**sft Ellipsoid Height: **907.41**sft **Geoid03**

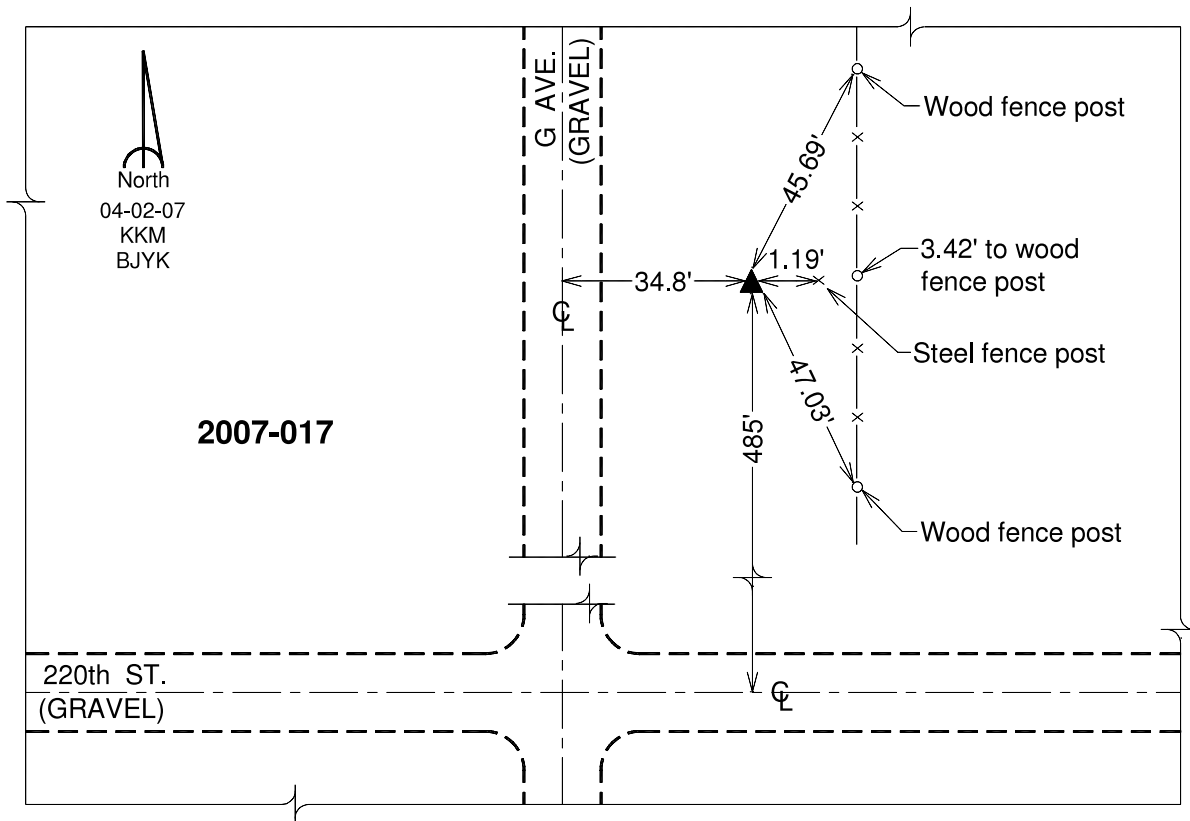
Latitude: **42°07'29.73051"N**

Longitude: **92°38'59.42844"W**

Mapping Angle: **0°34'34"**

Combination Scale Factor: **0.99994664**

**Monument Type:** Berntsen 3/4" Top Security Rod Monument with a 2-1/2" dia. domed survey cap and permanent magnet encased in a white PVC pipe with a NGS style alum. access cover.



*This document was prepared by DCI and GBC for use by Tama County, Iowa.*