

Tama County, Iowa
 Iowa North Zone (1401)
 Horiz. Datum: NAD83(NSRS2007)
 Vert. Datum: NAVD 1988
 US Survey Feet
2007

Point Name: **18**

Designation: 2007-018 Tama Co GPS Control Pt

Northing: **3525012.33**sft Easting: **5151516.27**sft

Orthometric Height: **1022.90**sft Ellipsoid Height: **918.92**sft **Geoid03**

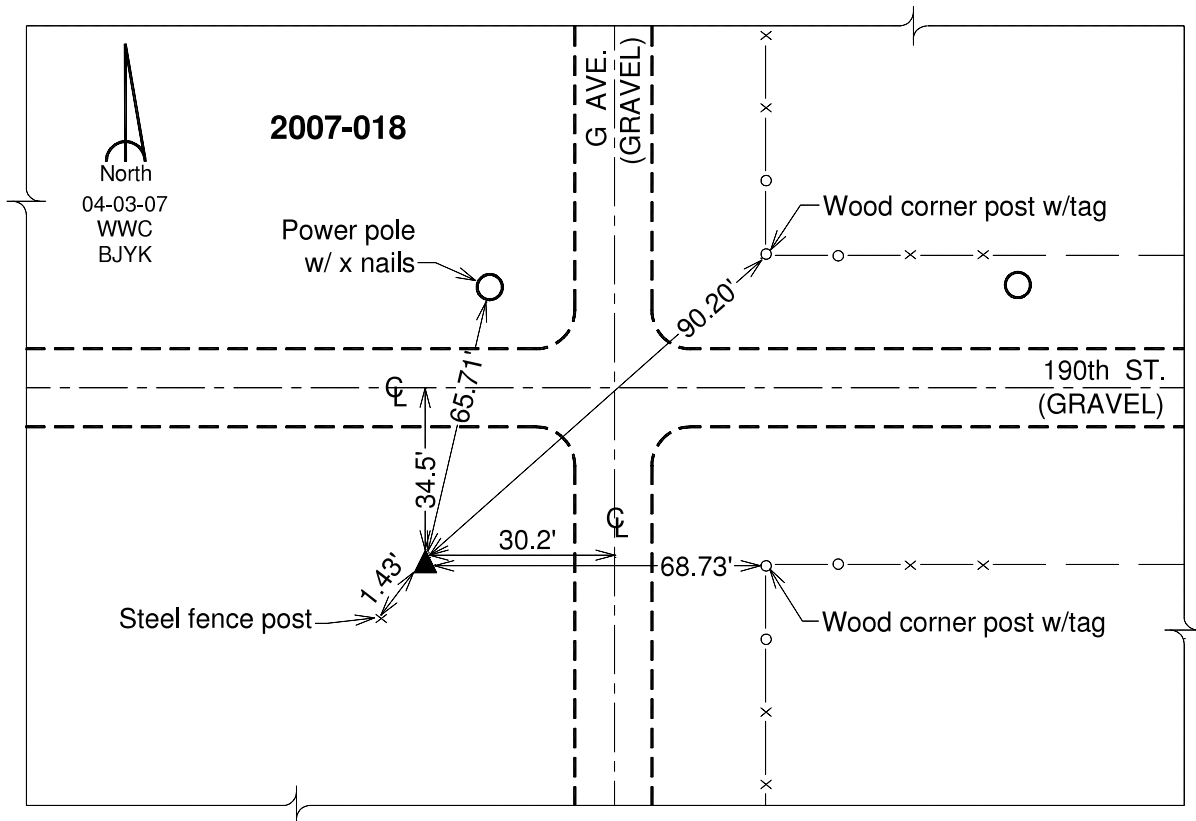
Latitude: **42°10'00.72826"N**

Longitude: **92°39'02.23087"W**

Mapping Angle: **0°34'32"**

Combination Scale Factor: **0.99993948**

Monument Type: Berntsen 3/4" Top Security Rod Monument with a 2-1/2" dia. domed survey cap and permanent magnet encased in a white PVC pipe with a NGS style alum. access cover.



This document was prepared by DCI and GBC for use by Tama County, Iowa.