

Tama County, Iowa
 Iowa North Zone (1401)
 Horiz. Datum: NAD83(NSRS2007)
 Vert. Datum: NAVD 1988
 US Survey Feet
2007

Point Name: **19**

Designation: 2007-019 Tama Co GPS Control Pt

Northing: **3540863.02**sft Easting: **5151628.37**sft

Orthometric Height: **1039.91**sft Ellipsoid Height: **935.84**sft **Geoid03**

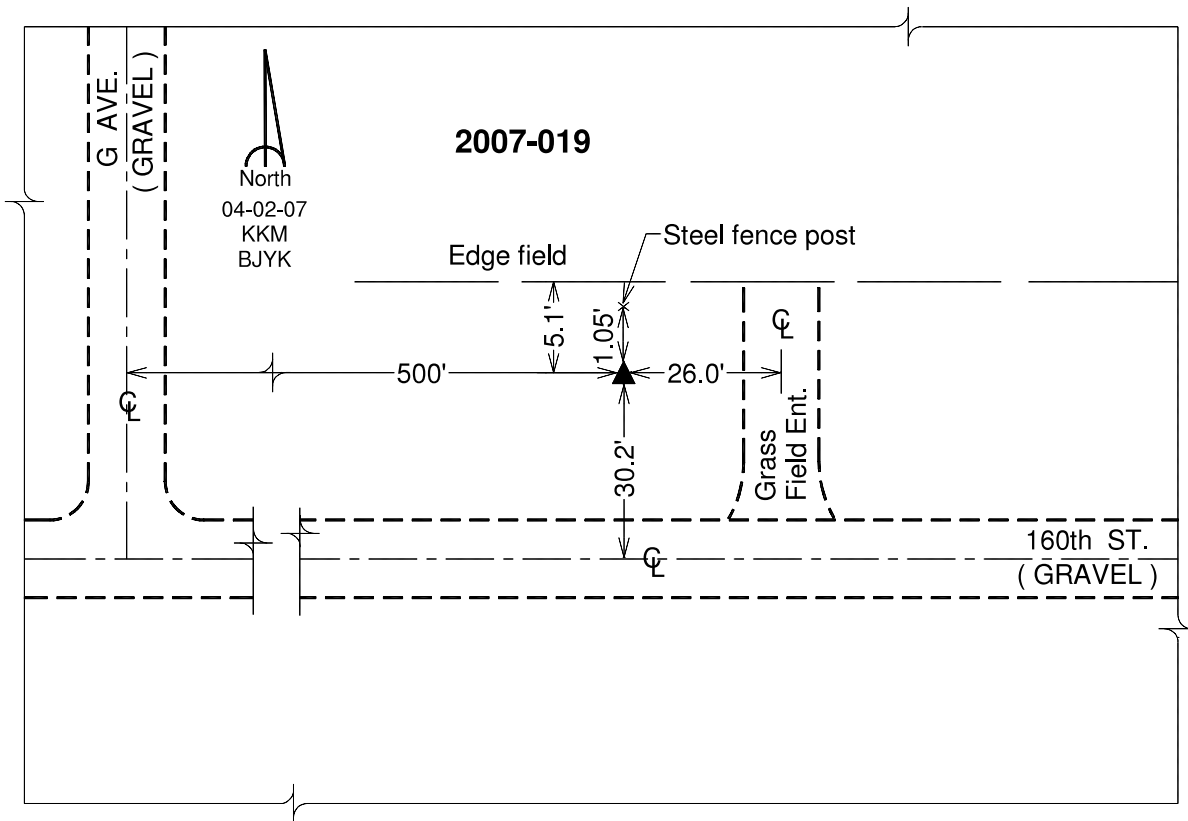
Latitude: **42°12'37.29457"N**

Longitude: **92°38'58.62520"W**

Mapping Angle: **0°34'35"**

Combination Scale Factor: **0.99993237**

Monument Type: Berntsen 3/4" Top Security Rod Monument with a 2-1/2" dia. domed survey cap and permanent magnet encased in a white PVC pipe with a NGS style alum. access cover.



This document was prepared by DCI and GBC for use by Tama County, Iowa.