

Tama County, Iowa
Iowa North Zone (1401)
Horiz. Datum: NAD83(NSRS2007)
Vert. Datum: NAVD 1988
US Survey Feet
2007

Point Name: **20**

Designation: 2007-020 Tama Co GPS Control Pt

Northing: **3556801.58**sft Easting: **5151103.22**sft

Orthometric Height: **1058.80**sft Ellipsoid Height: **954.62**sft **Geoid03**

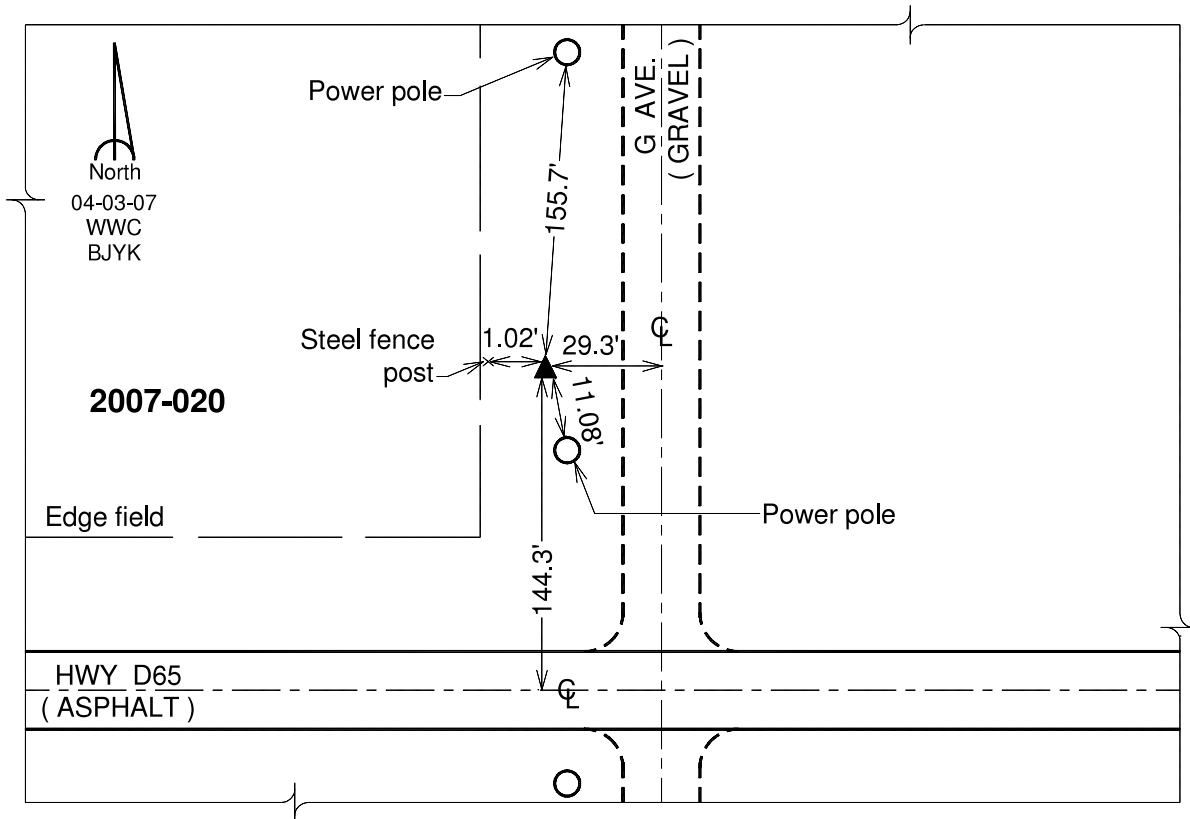
Latitude: **42°15'14.79195"N**

Longitude: **92°39'03.47611"W**

Mapping Angle: **0°34'32"**

Combination Scale Factor: **0.99992571**

Monument Type: Berntsen 3/4" Top Security Rod Monument with a 2-1/2" dia. domed survey cap and permanent magnet encased in a white PVC pipe with a NGS style alum. access cover.



This document was prepared by DCI and GBC for use by Tama County, Iowa.