

Tama County, Iowa
Iowa North Zone (1401)
Horiz. Datum: NAD83(NSRS2007)
Vert. Datum: NAVD 1988
US Survey Feet
2007

Point Name: **2001**

Designation: 2000-001 GPS Control Pt. (set by ASI in 2000)

Northing: **3456260.71**sft Easting: **5133712.10**sft

Orthometric Height: **862.60**sft Ellipsoid Height: **758.43**sft **Geoid03**

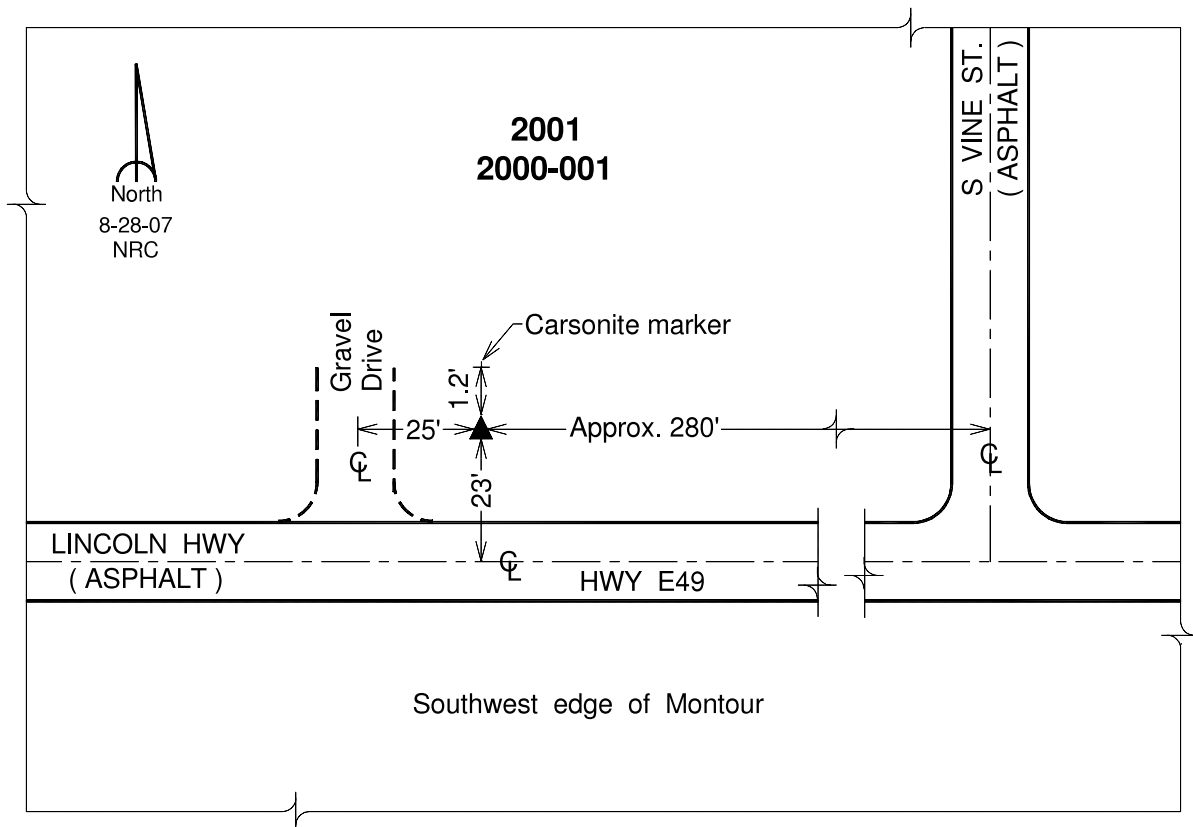
Latitude: **41°58'43.27375"N**

Longitude: **92°43'07.08129"W**

Mapping Angle: **0°31'46"**

Combination Scale Factor: **0.99998094**

Monument Type: 5/8" dia. driven aluminum rod with a 2-1/2" dia aluminum cap and permanent magnet encased in a 5" dia. PVC pipe with an aluminum access cover.



This document was prepared by DCI and GBC for use by Tama County, Iowa.