

**Tama County, Iowa**  
Iowa North Zone (1401)  
Horiz. Datum: NAD83(NSRS2007)  
Vert. Datum: NAVD 1988  
US Survey Feet  
**2007**

Point Name: **2023**

**Designation:** 2000-023 GPS Control Pt. (set by ASI in 2000)

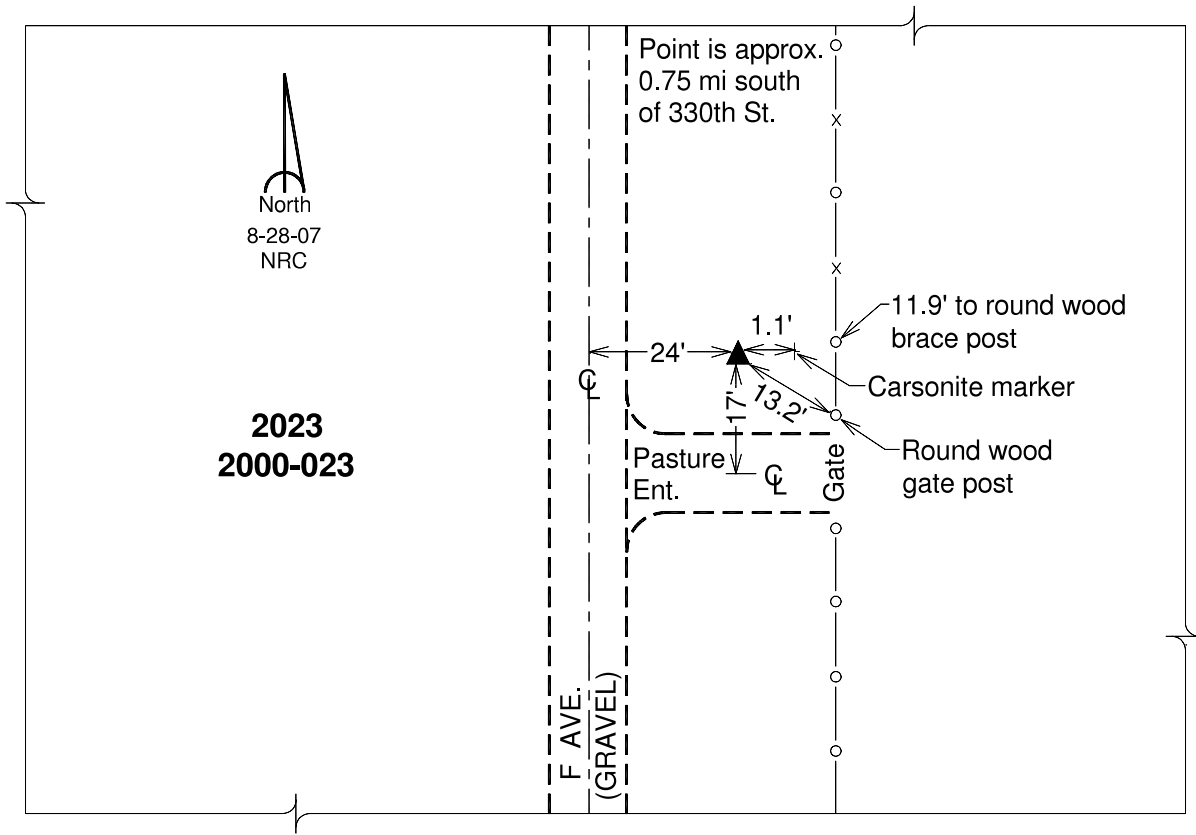
Northing: **3445131.25**sft Easting: **5147416.77**sft

Orthometric Height: **932.55**sft Ellipsoid Height: **828.31**sft **Geoid03**

Latitude: **41°56'52.04209"N** Longitude: **92°40'07.09696"W**

Mapping Angle: **0°33'48"** Combination Scale Factor: **0.99998418**

**Monument Type:** 5/8" dia. driven aluminum rod with a 2-1/2" dia aluminum cap and permanent magnet encased in a 5" dia. PVC pipe with an aluminum access cover.



*This document was prepared by DCI and GBC for use by Tama County, Iowa.*