

Tama County, Iowa
Iowa North Zone (1401)
Horiz. Datum: NAD83(NSRS2007)
Vert. Datum: NAVD 1988
US Survey Feet
2007

Point Name: **2059**

Designation: 2000-059 GPS Control Pt. (set by ASI in 2000)

Northing: **3472706.67**sft Easting: **5165519.67**sft

Orthometric Height: **863.58**sft Ellipsoid Height: **759.55**sft **Geoid03**

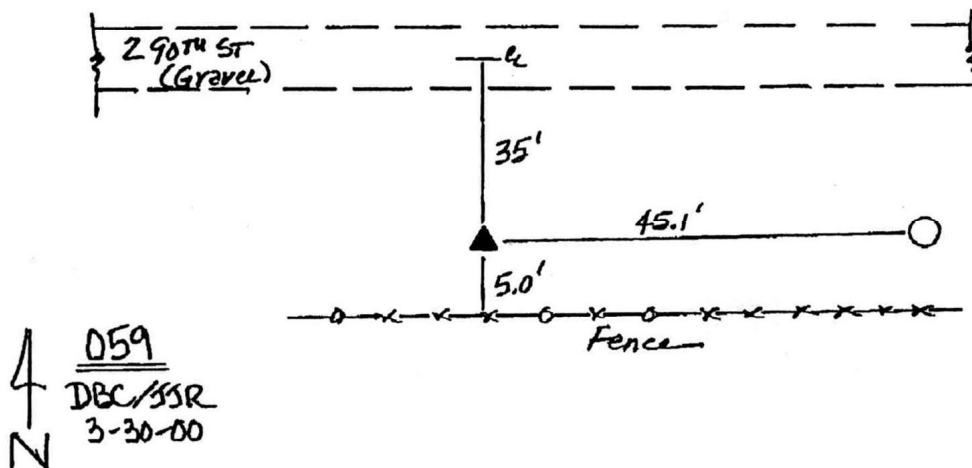
Latitude: **42°01'22.60897"N** Longitude: **92°36'03.67540"W**

Mapping Angle: **0°36'33"** Combination Scale Factor: **0.99997198**

Monument Type: 5/8" dia. driven aluminum rod with a 2-1/2" dia aluminum cap and permanent magnet encased in a 5" dia. PVC pipe with an aluminum access cover.

To Reach: 35ft S of 290th St, near the S1/4 Cor of Sec 4 T83N R15W.

Date Printed July 19, 2000



This document was prepared by DCI and GBC for use by Tama County, Iowa.