

**Tama County, Iowa**  
 Iowa North Zone (1401)  
 Horiz. Datum: NAD83(NSRS2007)  
 Vert. Datum: NAVD 1988  
 US Survey Feet  
**2007**

Point Name: **2060**

**Designation:** 2000-060 GPS Control Pt. (set by ASI in 2000)

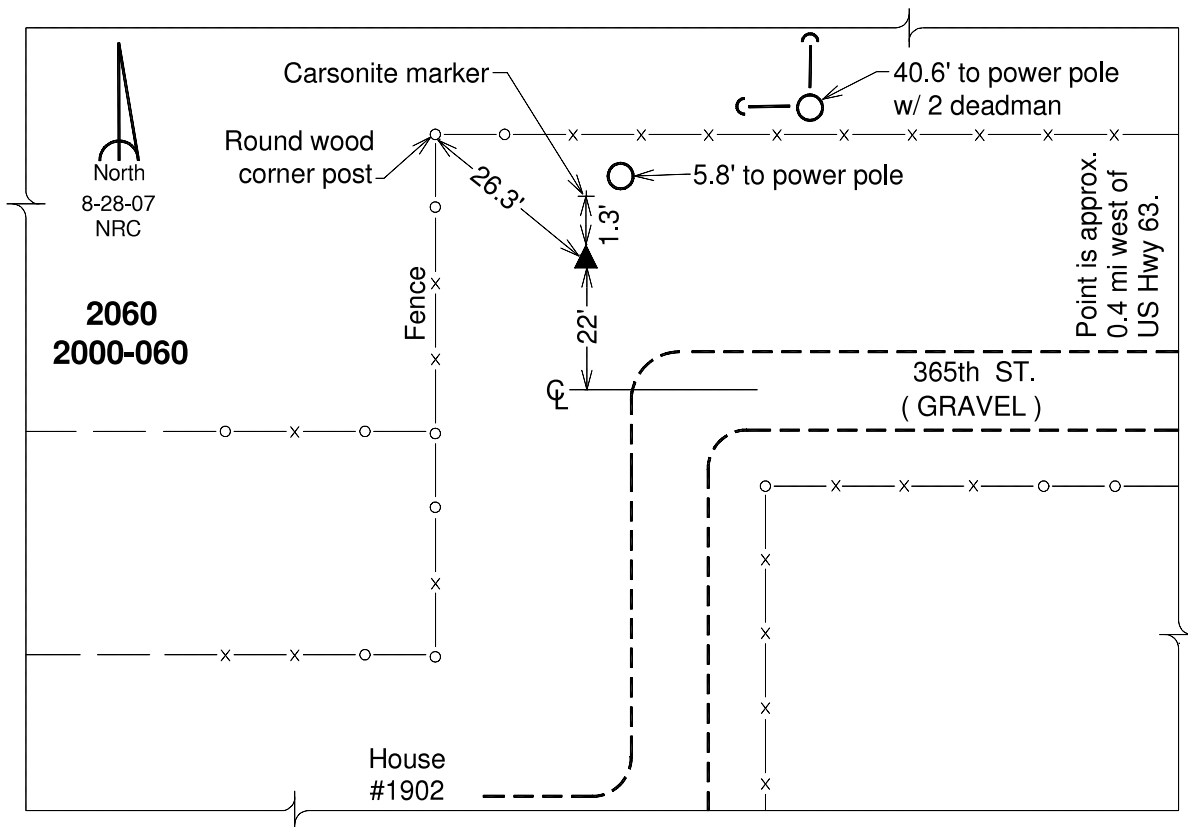
Northing: **3432823.93**sft Easting: **5168762.24**sft

Orthometric Height: **984.53**sft Ellipsoid Height: **880.24**sft **Geoid03**

Latitude: **41°54'48.29669"N** Longitude: **92°35'26.40136"W**

Mapping Angle: **0°36'59"** Combination Scale Factor: **0.99998934**

**Monument Type:** 5/8" dia. driven aluminum rod with a 2-1/2" dia aluminum cap and permanent magnet encased in a 5" dia. PVC pipe with an aluminum access cover.



*This document was prepared by DCI and GBC for use by Tama County, Iowa.*