

Tama County, Iowa
 Iowa North Zone (1401)
 Horiz. Datum: NAD83(NSRS2007)
 Vert. Datum: NAVD 1988
 US Survey Feet
2007

Point Name: **24**

Designation: 2007-024 Tama Co GPS Control Pt

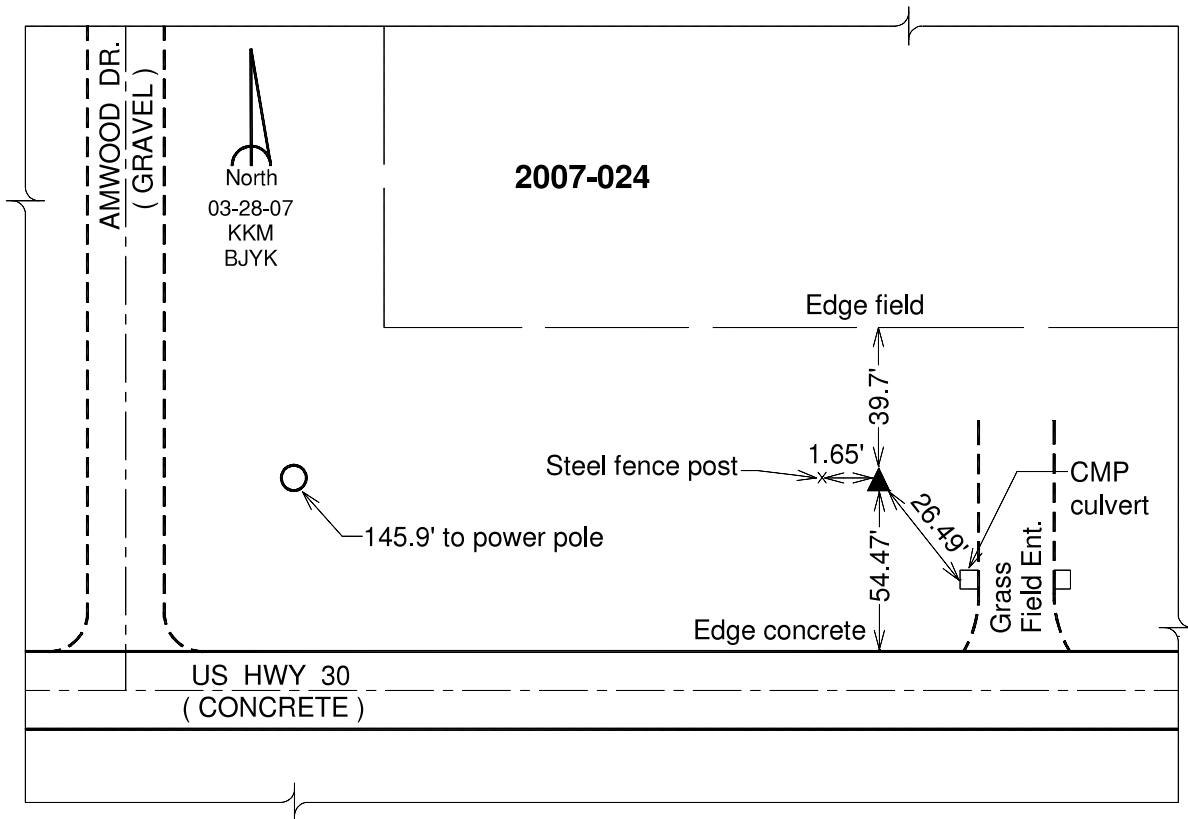
Northing: **3460917.86**sft Easting: **5169152.87**sft

Orthometric Height: **842.13**sft Ellipsoid Height: **738.02**sft **Geoid03**

Latitude: **41°59'25.77219"N** Longitude: **92°35'17.22749"W**

Mapping Angle: **0°37'05"** Combination Scale Factor: **0.99997948**

Monument Type: Berntsen 3/4" Top Security Rod Monument with a 2-1/2" dia. domed survey cap and permanent magnet encased in a white PVC pipe with a NGS style alum. access cover.



This document was prepared by DCI and GBC for use by Tama County, Iowa.