

**Tama County, Iowa**  
Iowa North Zone (1401)  
Horiz. Datum: NAD83(NSRS2007)  
Vert. Datum: NAVD 1988  
US Survey Feet  
**2007**

Point Name: **25**

**Designation:** 2007-025 Tama Co GPS Control Pt

Northing: **3476296.99**sft Easting: **5167143.13**sft

Orthometric Height: **853.93**sft Ellipsoid Height: **749.95**sft **Geoid03**

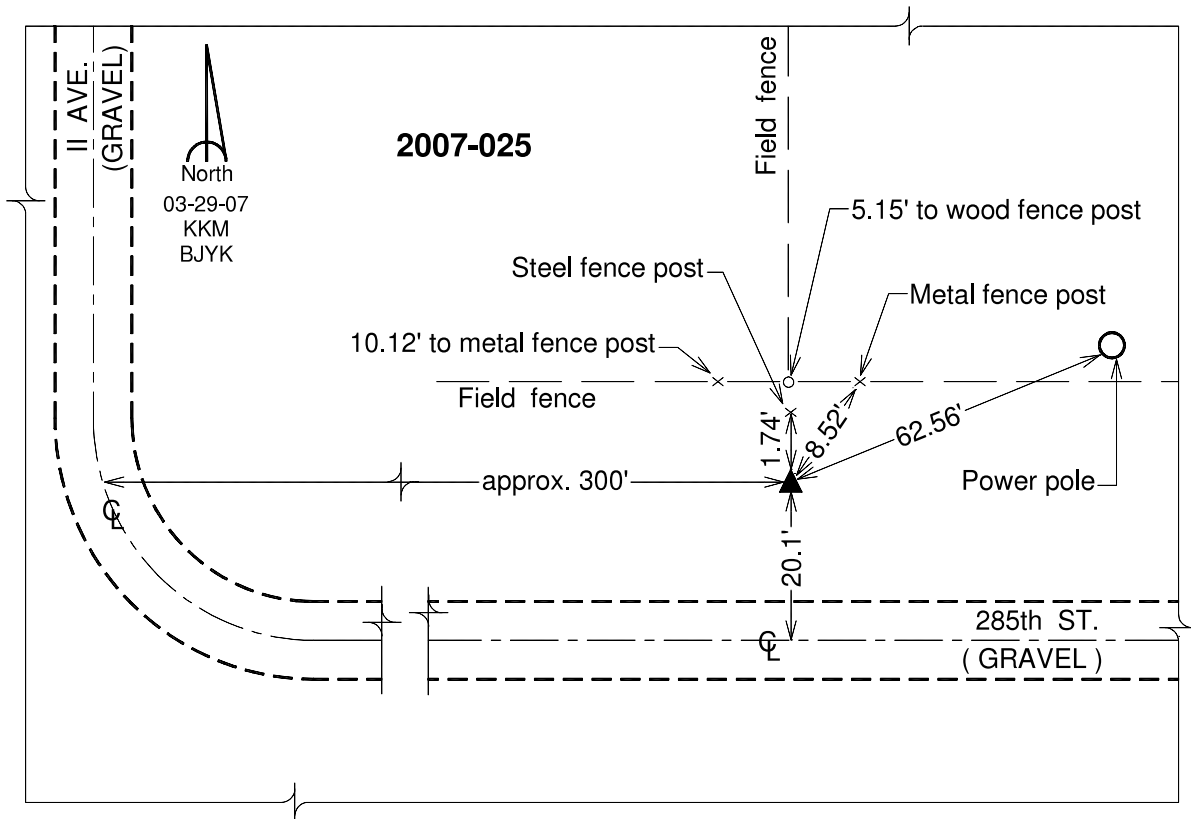
Latitude: **42°01'57.90383"N**

Longitude: **92°35'41.65857"W**

Mapping Angle: **0°36'48"**

Combination Scale Factor: **0.99997055**

**Monument Type:** Berntsen 3/4" Top Security Rod Monument with a 2-1/2" dia. domed survey cap and permanent magnet encased in a white PVC pipe with a NGS style alum. access cover.



*This document was prepared by DCI and GBC for use by Tama County, Iowa.*