

**Tama County, Iowa**  
 Iowa North Zone (1401)  
 Horiz. Datum: NAD83(NSRS2007)  
 Vert. Datum: NAVD 1988  
 US Survey Feet  
**2007**

Point Name: **27**

**Designation:** 2007-027 Tama Co GPS Control Pt

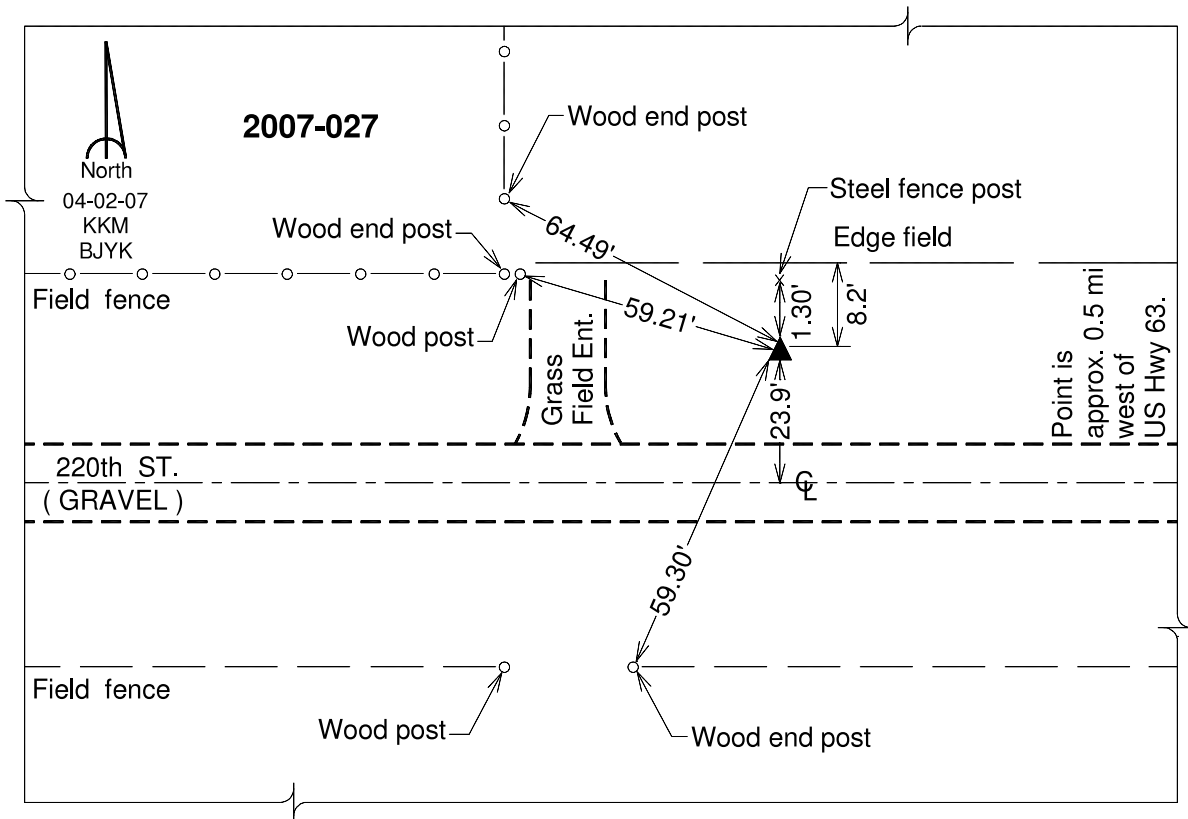
Northing: **3509344.42**sft Easting: **5167839.50**sft

Orthometric Height: **1013.07**sft Ellipsoid Height: **909.35**sft **Geoid03**

Latitude: **42°07'24.27973"N** Longitude: **92°35'27.72331"W**

Mapping Angle: **0°36'58"** Combination Scale Factor: **0.99994680**

**Monument Type:** Berntsen 3/4" Top Security Rod Monument with a 2-1/2" dia. domed survey cap and permanent magnet encased in a white PVC pipe with a NGS style alum. access cover.



*This document was prepared by DCI and GBC for use by Tama County, Iowa.*