

Tama County, Iowa
 Iowa North Zone (1401)
 Horiz. Datum: NAD83(NSRS2007)
 Vert. Datum: NAVD 1988
 US Survey Feet
2007

Point Name: **28**

Designation: 2007-028 Tama Co GPS Control Pt

Northing: **3525250.89**sft Easting: **5167617.90**sft

Orthometric Height: **1001.88**sft Ellipsoid Height: **898.16**sft **Geoid03**

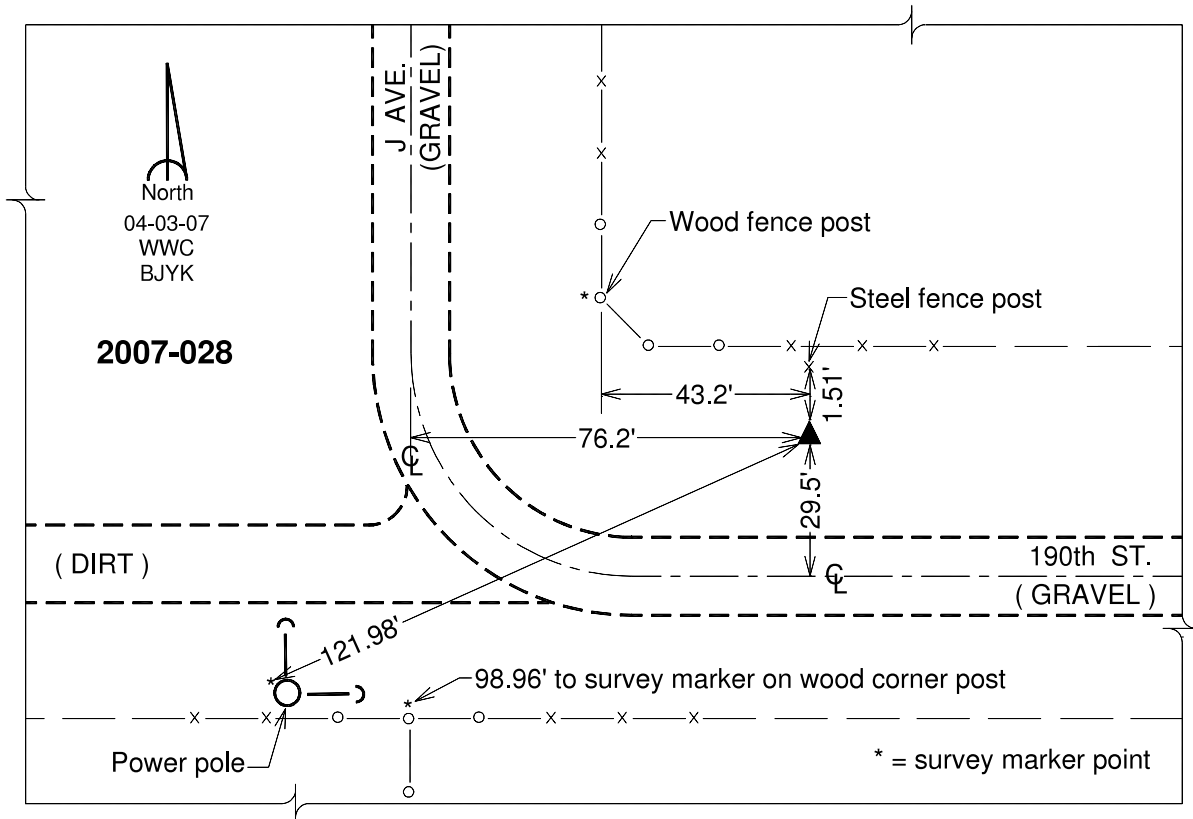
Latitude: **42°10'01.43077"N**

Longitude: **92°35'28.39477"W**

Mapping Angle: **0°36'57"**

Combination Scale Factor: **0.99994044**

Monument Type: Berntsen 3/4" Top Security Rod Monument with a 2-1/2" dia. domed survey cap and permanent magnet encased in a white PVC pipe with a NGS style alum. access cover.



This document was prepared by DCI and GBC for use by Tama County, Iowa.