

**Tama County, Iowa**  
 Iowa North Zone (1401)  
 Horiz. Datum: NAD83(NSRS2007)  
 Vert. Datum: NAVD 1988  
 US Survey Feet  
**2007**

Point Name: **29**

**Designation:** 2007-029 Tama Co GPS Control Pt

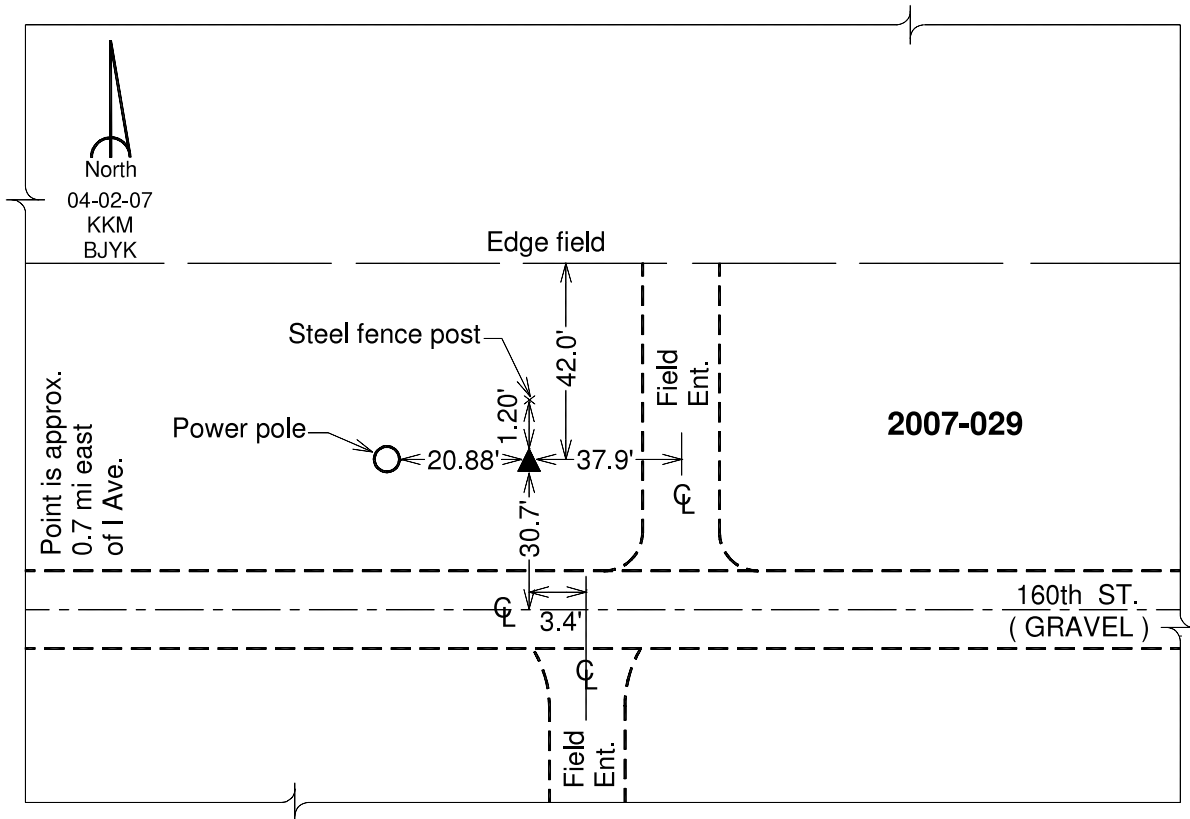
Northing: **3541002.70**sft Easting: **5165743.51**sft

Orthometric Height: **1038.17**sft Ellipsoid Height: **934.33**sft **Geoid03**

Latitude: **42°12'37.22877"N** Longitude: **92°35'51.05059"W**

Mapping Angle: **0°36'42"** Combination Scale Factor: **0.99993245**

**Monument Type:** Berntsen 3/4" Top Security Rod Monument with a 2-1/2" dia. domed survey cap and permanent magnet encased in a white PVC pipe with a NGS style alum. access cover.



*This document was prepared by DCI and GBC for use by Tama County, Iowa.*