

Tama County, Iowa
 Iowa North Zone (1401)
 Horiz. Datum: NAD83(NSRS2007)
 Vert. Datum: NAVD 1988
 US Survey Feet
2007

Point Name: **33**

Designation: 2007-033 Tama Co GPS Control Pt

Northing: **3451476.66**sft Easting: **5184311.39**sft

Orthometric Height: **829.25**sft Ellipsoid Height: **725.17**sft **Geoid03**

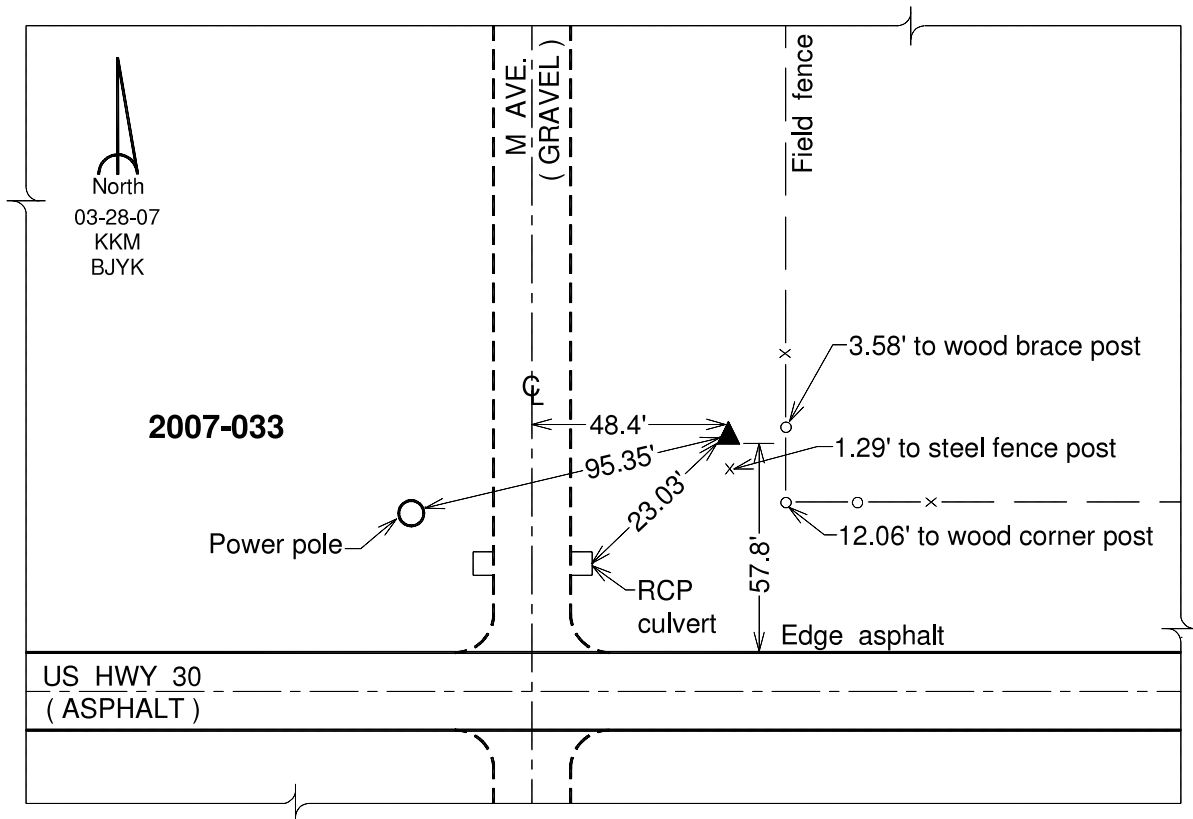
Latitude: **41°57'50.84626"N**

Longitude: **92°31'57.94326"W**

Mapping Angle: **0°39'20"**

Combination Scale Factor: **0.99998559**

Monument Type: Berntsen 3/4" Top Security Rod Monument with a 2-1/2" dia. domed survey cap and permanent magnet encased in a white PVC pipe with a NGS style alum. access cover.



This document was prepared by DCI and GBC for use by Tama County, Iowa.