

Tama County, Iowa
 Iowa North Zone (1401)
 Horiz. Datum: NAD83(NSRS2007)
 Vert. Datum: NAVD 1988
 US Survey Feet
2007

Point Name: **34**

Designation: 2007-034 Tama Co GPS Control Pt

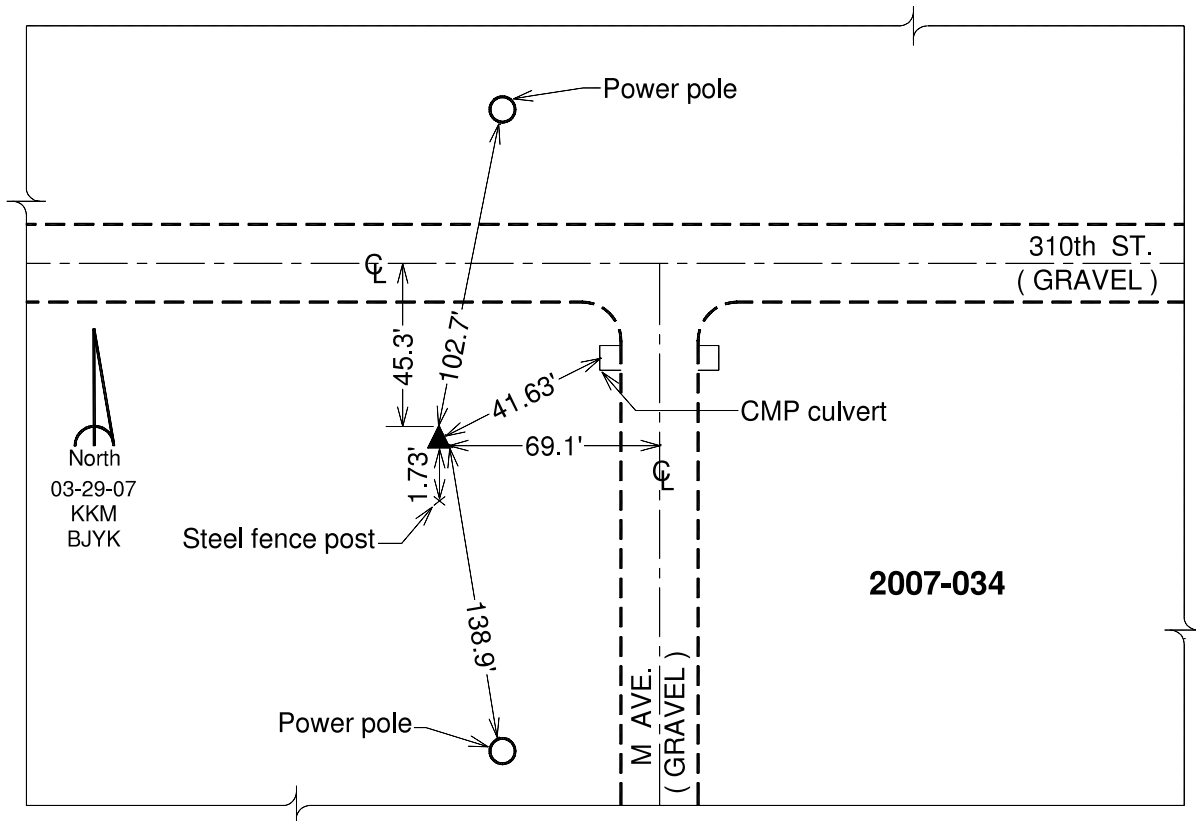
Northing: **3461939.83**sft Easting: **5184062.15**sft

Orthometric Height: **934.84**sft Ellipsoid Height: **830.88**sft **Geoid03**

Latitude: **41°59'34.23095"N** Longitude: **92°31'59.65833"W**

Mapping Angle: **0°39'19"** Combination Scale Factor: **0.99997457**

Monument Type: Berntsen 3/4" Top Security Rod Monument with a 2-1/2" dia. domed survey cap and permanent magnet encased in a white PVC pipe with a NGS style alum. access cover.



This document was prepared by DCI and GBC for use by Tama County, Iowa.