

**Tama County, Iowa**  
 Iowa North Zone (1401)  
 Horiz. Datum: NAD83(NSRS2007)  
 Vert. Datum: NAVD 1988  
 US Survey Feet  
**2007**

Point Name: **37**

**Designation:** 2007-037 Tama Co GPS Control Pt

Northing: **3509393.36**sft Easting: **5183579.19**sft

Orthometric Height: **1011.07**sft Ellipsoid Height: **907.60**sft **Geoid03**

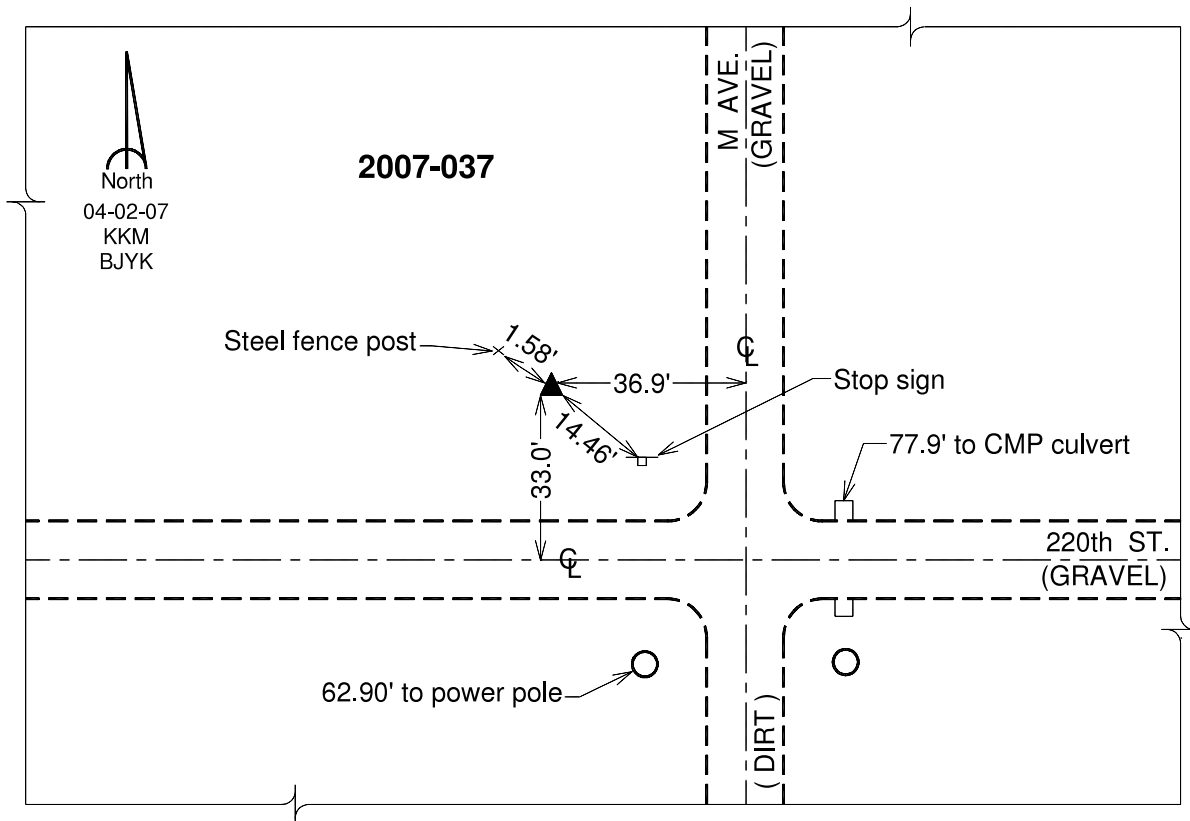
Latitude: **42°07'23.03805"N**

Longitude: **92°31'58.86576"W**

Mapping Angle: **0°39'19"**

Combination Scale Factor: **0.99994694**

**Monument Type:** Berntsen 3/4" Top Security Rod Monument with a 2-1/2" dia. domed survey cap and permanent magnet encased in a white PVC pipe with a NGS style alum. access cover.



*This document was prepared by DCI and GBC for use by Tama County, Iowa.*