

**Tama County, Iowa**  
Iowa North Zone (1401)  
Horiz. Datum: NAD83(NSRS2007)  
Vert. Datum: NAVD 1988  
US Survey Feet  
**2007**

Point Name: **39**

**Designation:** NGS 2nd order horizontal control station "TRAER" PID: NK0597

Northing: **3539954.45**sft Easting: **5181948.33**sft

Orthometric Height: **1051.46**sft Ellipsoid Height: **947.96**sft **Geoid03**

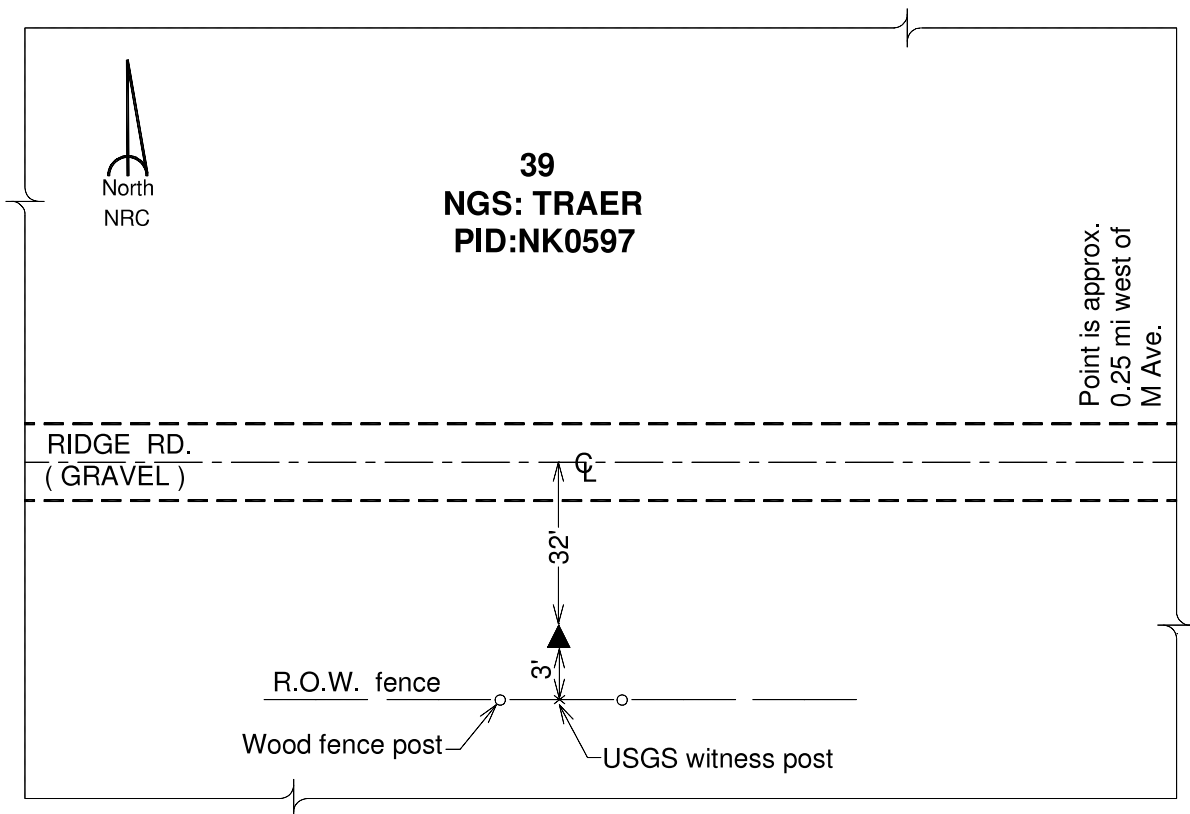
Latitude: **42°12'25.10848"N**

Longitude: **92°32'15.88966"W**

Mapping Angle: **0°39'08"**

Combination Scale Factor: **0.99993226**

**Monument Type:** The station mark is a USGS traverse station disk stamped "ET TRAER 1970" crimped on a copper-clad steel rod and set in a 6" clay tile.



*This document was prepared by DCI and GBC for use by Tama County, Iowa.*