

Tama County, Iowa
 Iowa North Zone (1401)
 Horiz. Datum: NAD83(NSRS2007)
 Vert. Datum: NAVD 1988
 US Survey Feet
2007

Point Name: **4**

Designation: 2007-004 Tama Co GPS Control Pt

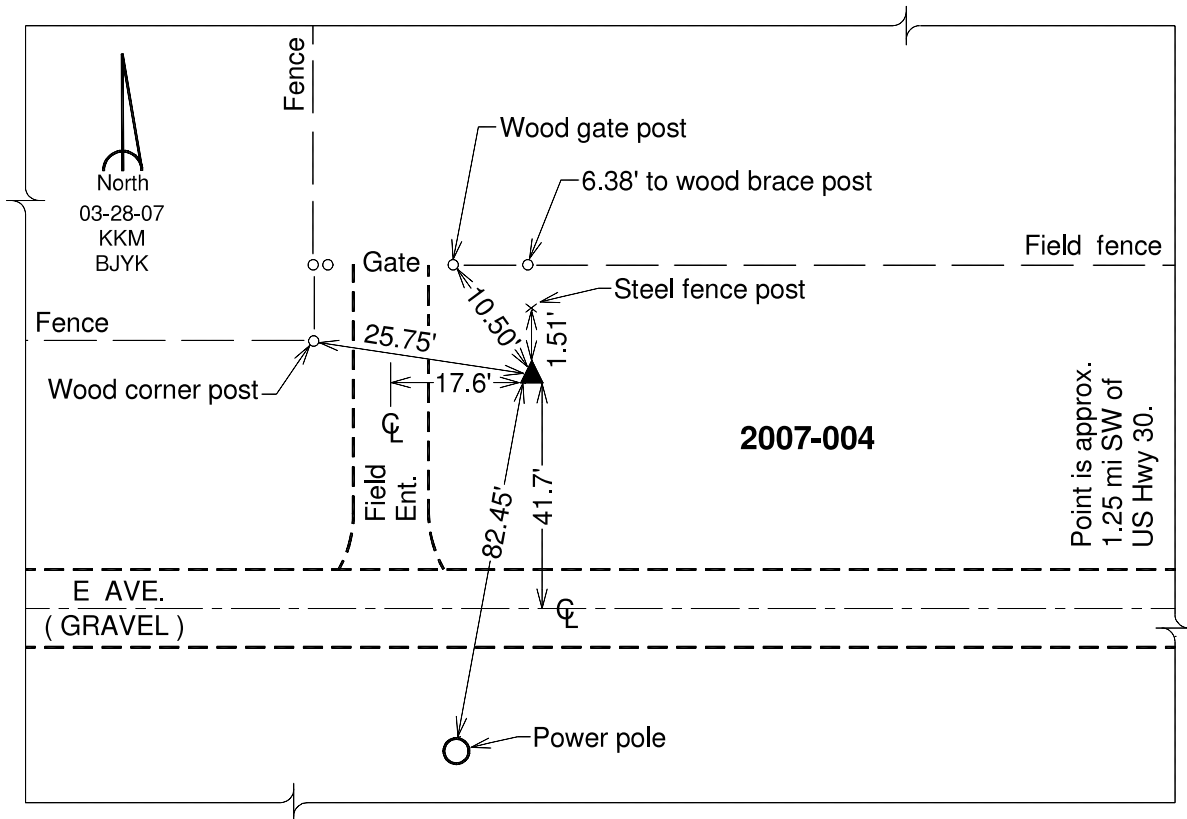
Northing: **3458666.26**sft Easting: **5136811.00**sft

Orthometric Height: **838.88**sft Ellipsoid Height: **734.72**sft **Geoid03**

Latitude: **41°59'06.75154"N** Longitude: **92°42'25.75671"W**

Mapping Angle: **0°32'14"** Combination Scale Factor: **0.99998073**

Monument Type: Berntsen 3/4" Top Security Rod Monument with a 2-1/2" dia. domed survey cap and permanent magnet encased in a white PVC pipe with a NGS style alum. access cover.



This document was prepared by DCI and GBC for use by Tama County, Iowa.