

**Tama County, Iowa**  
 Iowa North Zone (1401)  
 Horiz. Datum: NAD83(NSRS2007)  
 Vert. Datum: NAVD 1988  
 US Survey Feet  
**2007**

Point Name: **41**

**Designation:** 2007-041 Tama Co GPS Control Pt

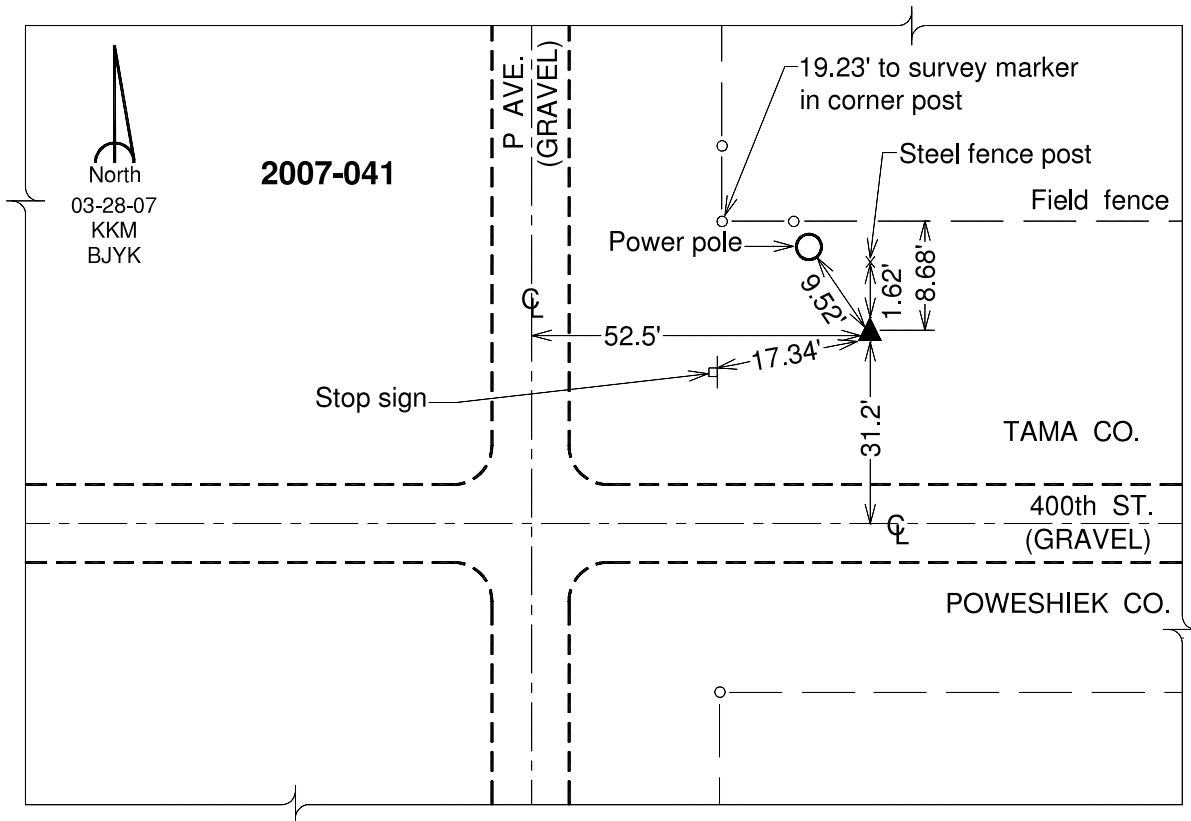
Northing: **3414637.40**sft Easting: **5200810.34**sft

Orthometric Height: **929.98**sft Ellipsoid Height: **825.55**sft **Geoid03**

Latitude: **41°51'45.02434"N** Longitude: **92°28'25.49208"W**

Mapping Angle: **0°41'44"** Combination Scale Factor: **1.00000393**

**Monument Type:** Berntsen 3/4" Top Security Rod Monument with a 2-1/2" dia. domed survey cap and permanent magnet encased in a white PVC pipe with a NGS style alum. access cover.



*This document was prepared by DCI and GBC for use by Tama County, Iowa.*