

Tama County, Iowa
Iowa North Zone (1401)
Horiz. Datum: NAD83(NSRS2007)
Vert. Datum: NAVD 1988
US Survey Feet
2007

Point Name: **45**

Designation: 2007-045 Tama Co GPS Control Pt

Northing: **3477242.98**sft Easting: **5200136.05**sft

Orthometric Height: **1014.53**sft Ellipsoid Height: **910.96**sft **Geoid03**

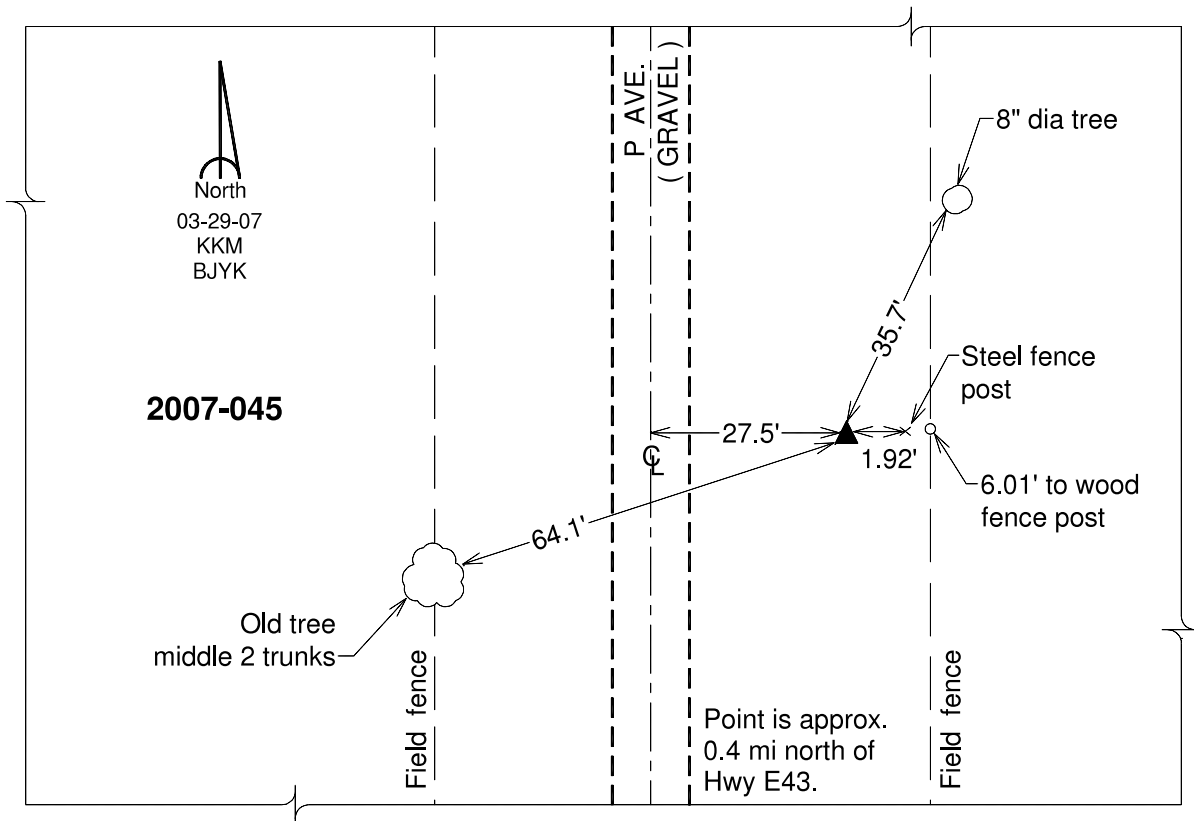
Latitude: **42°02'03.52485"N**

Longitude: **92°28'24.35597"W**

Mapping Angle: **0°41'45"**

Combination Scale Factor: **0.99996256**

Monument Type: Berntsen 3/4" Top Security Rod Monument with a 2-1/2" dia. domed survey cap and permanent magnet encased in a white PVC pipe with a NGS style alum. access cover.



This document was prepared by DCI and GBC for use by Tama County, Iowa.