

**Tama County, Iowa**  
Iowa North Zone (1401)  
Horiz. Datum: NAD83(NSRS2007)  
Vert. Datum: NAVD 1988  
US Survey Feet  
**2007**

Point Name: **46**

**Designation:** 2007-046 Tama Co GPS Control Pt

Northing: **3492978.81**sft Easting: **5199793.53**sft

Orthometric Height: **1024.90**sft Ellipsoid Height: **921.51**sft **Geoid03**

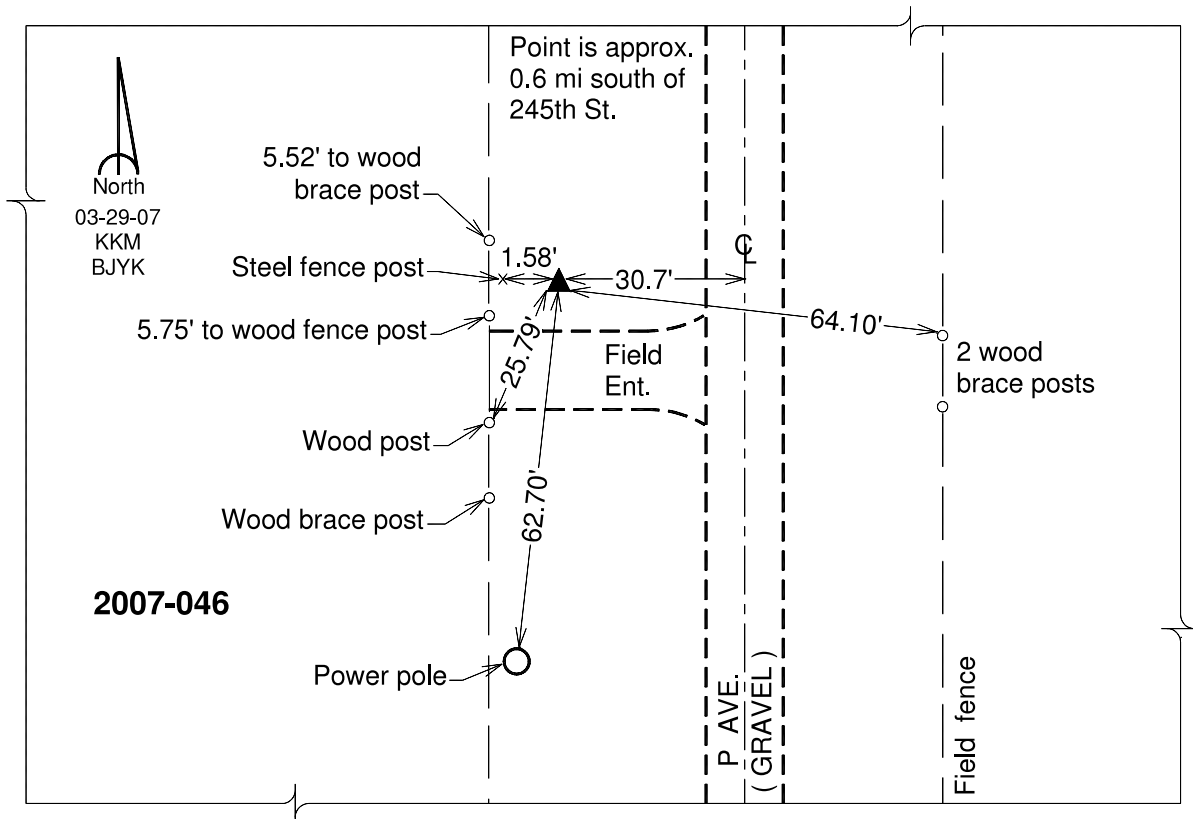
Latitude: **42°04'39.00543"N**

Longitude: **92°28'26.36387"W**

Mapping Angle: **0°41'43"**

Combination Scale Factor: **0.99995408**

**Monument Type:** Berntsen 3/4" Top Security Rod Monument with a 2-1/2" dia. domed survey cap and permanent magnet encased in a white PVC pipe with a NGS style alum. access cover.



*This document was prepared by DCI and GBC for use by Tama County, Iowa.*