

**Tama County, Iowa**  
 Iowa North Zone (1401)  
 Horiz. Datum: NAD83(NSRS2007)  
 Vert. Datum: NAVD 1988  
 US Survey Feet  
**2007**

Point Name: **47**

**Designation:** 2007-047 Tama Co GPS Control Pt

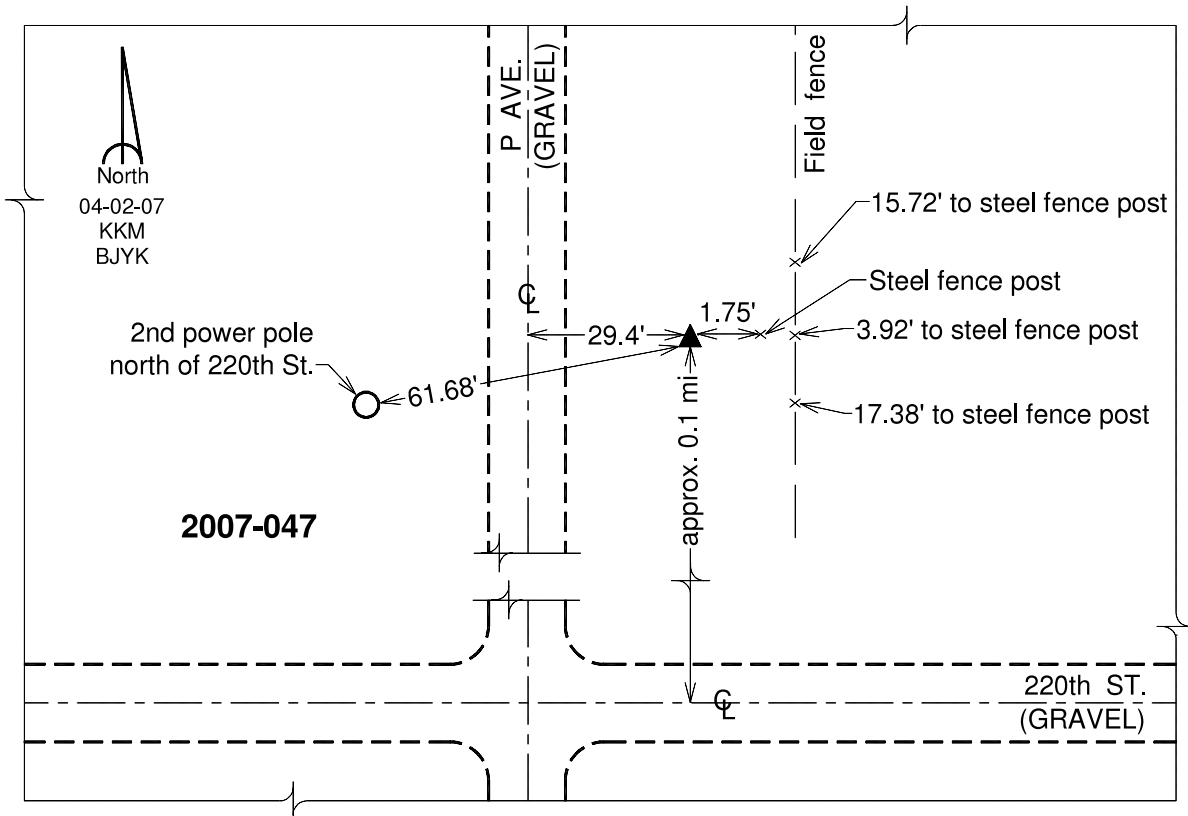
Northing: **3510122.12**sft Easting: **5199315.54**sft

Orthometric Height: **996.18**sft Ellipsoid Height: **892.96**sft **Geoid03**

Latitude: **42°07'28.40530"N** Longitude: **92°28'29.94540"W**

Mapping Angle: **0°41'41"** Combination Scale Factor: **0.99994739**

**Monument Type:** Berntsen 3/4" Top Security Rod Monument with a 2-1/2" dia. domed survey cap and permanent magnet encased in a white PVC pipe with a NGS style alum. access cover.



*This document was prepared by DCI and GBC for use by Tama County, Iowa.*