

Tama County, Iowa
 Iowa North Zone (1401)
 Horiz. Datum: NAD83(NSRS2007)
 Vert. Datum: NAVD 1988
 US Survey Feet
2007

Point Name: **48**

Designation: 2007-048 Tama Co GPS Control Pt

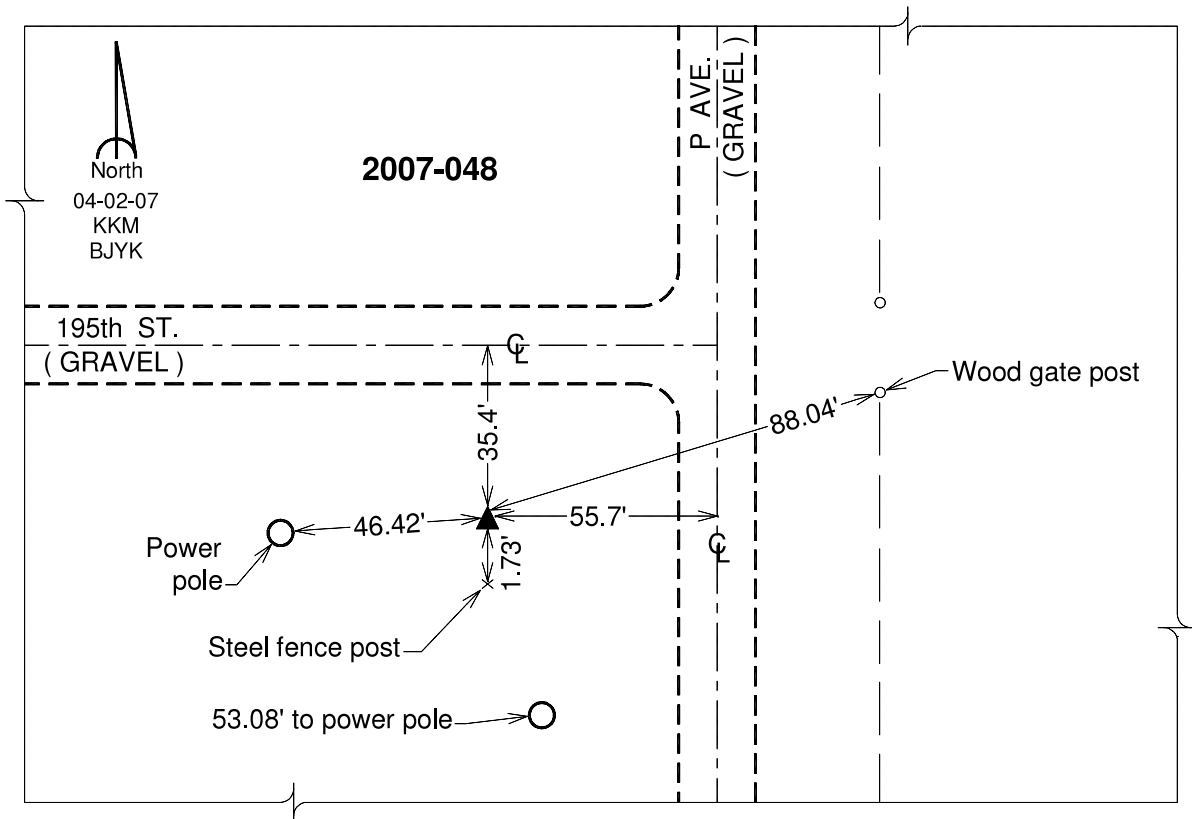
Northing: **3522798.90**sft Easting: **5199037.49**sft

Orthometric Height: **970.81**sft Ellipsoid Height: **867.70**sft **Geoid03**

Latitude: **42°09'33.66055"N** Longitude: **92°28'31.59624"W**

Mapping Angle: **0°41'40"** Combination Scale Factor: **0.99994307**

Monument Type: Berntsen 3/4" Top Security Rod Monument with a 2-1/2" dia. domed survey cap and permanent magnet encased in a white PVC pipe with a NGS style alum. access cover.



This document was prepared by DCI and GBC for use by Tama County, Iowa.