

Tama County, Iowa
 Iowa North Zone (1401)
 Horiz. Datum: NAD83(NSRS2007)
 Vert. Datum: NAVD 1988
 US Survey Feet
2007

Point Name: **5**

Designation: 2007-005 Tama Co GPS Control Pt

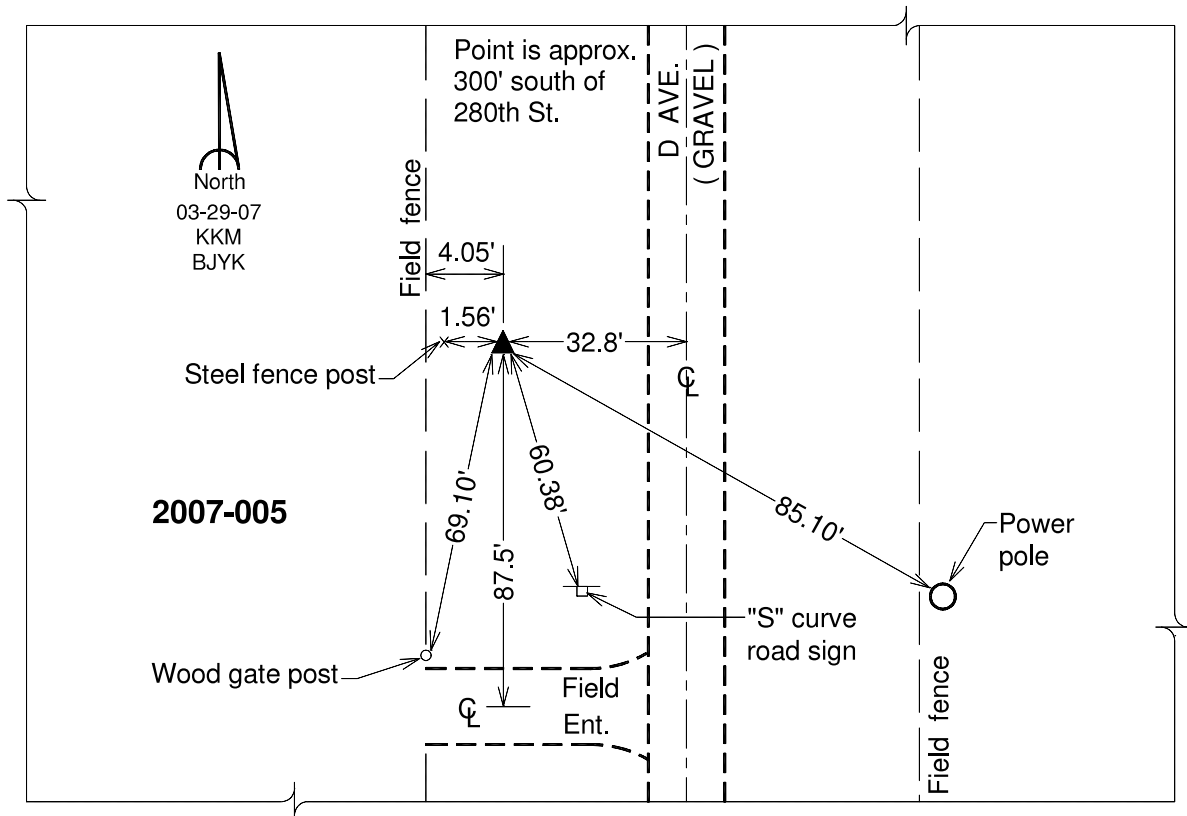
Northing: **3476412.08**sft Easting: **5135795.00**sft

Orthometric Height: **996.14**sft Ellipsoid Height: **892.09**sft **Geoid03**

Latitude: **42°02'02.14482"N** Longitude: **92°42'37.01392"W**

Mapping Angle: **0°32'07"** Combination Scale Factor: **0.99996354**

Monument Type: Berntsen 3/4" Top Security Rod Monument with a 2-1/2" dia. domed survey cap and permanent magnet encased in a white PVC pipe with a NGS style alum. access cover.



This document was prepared by DCI and GBC for use by Tama County, Iowa.