

**Tama County, Iowa**  
 Iowa North Zone (1401)  
 Horiz. Datum: NAD83(NSRS2007)  
 Vert. Datum: NAVD 1988  
 US Survey Feet  
**2007**

Point Name: **50**

**Designation:** 2007-050 Tama Co GPS Control Pt

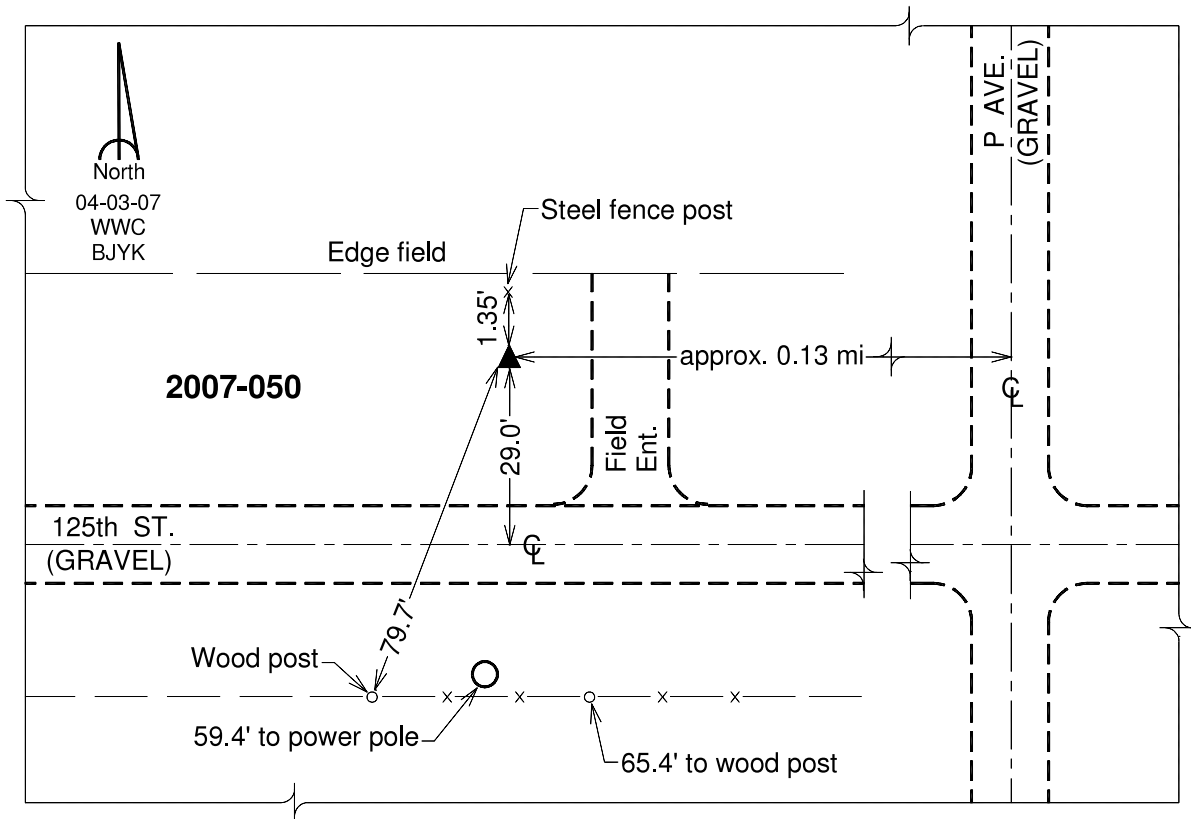
Northing: **3559911.40**sft Easting: **5198043.08**sft

Orthometric Height: **989.70**sft Ellipsoid Height: **886.47**sft **Geoid03**

Latitude: **42°15'40.37831"N** Longitude: **92°28'38.83846"W**

Mapping Angle: **0°41'35"** Combination Scale Factor: **0.99992808**

**Monument Type:** Berntsen 3/4" Top Security Rod Monument with a 2-1/2" dia. domed survey cap and permanent magnet encased in a white PVC pipe with a NGS style alum. access cover.



*This document was prepared by DCI and GBC for use by Tama County, Iowa.*