

Tama County, Iowa
Iowa North Zone (1401)
Horiz. Datum: NAD83(NSRS2007)
Vert. Datum: NAVD 1988
US Survey Feet
2007

Point Name: **509**

Designation: TBM near NGS 2nd order vertical control station "V 83" PID: MH0021

Northing: **3435497.83**sft Easting: **5222050.73**sft

Orthometric Height: **786.10**sft Ellipsoid Height: **681.90**sft **Geoid03**

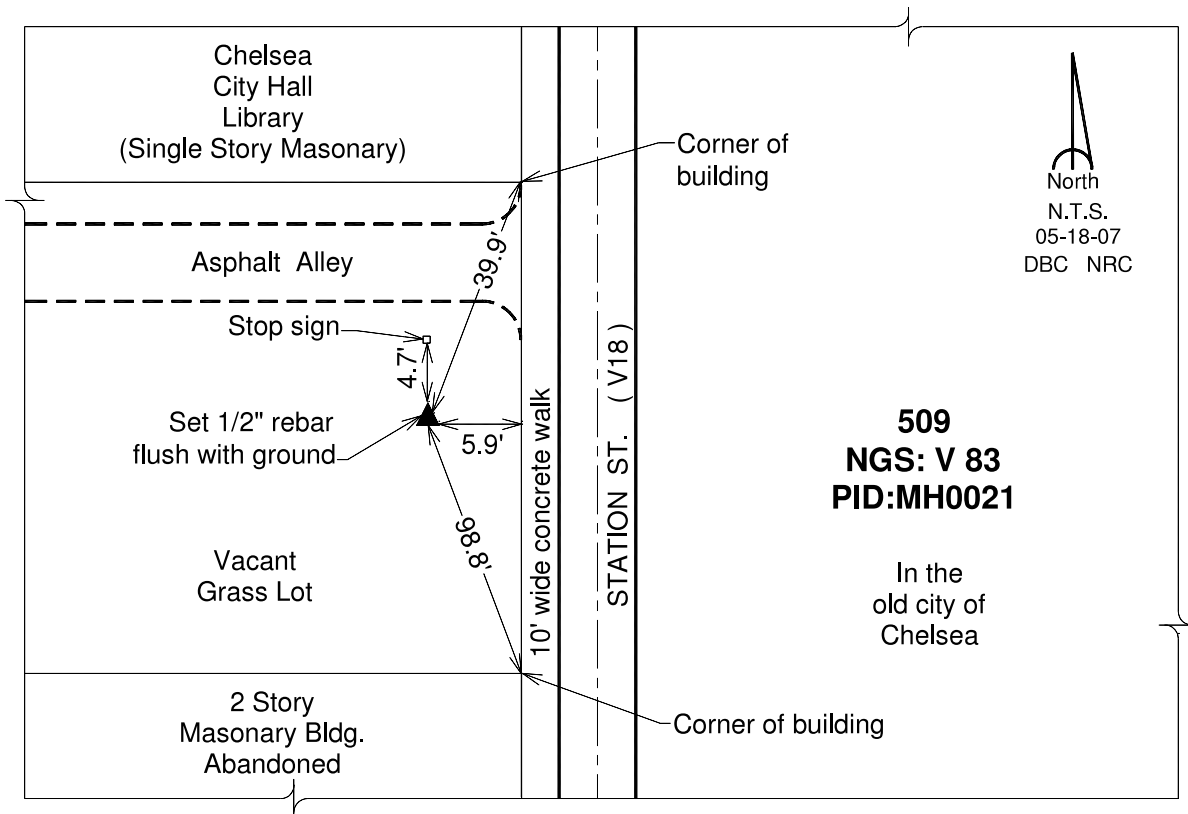
Latitude: **41°55'08.43745"N**

Longitude: **92°23'41.21839"W**

Mapping Angle: **0°44'57"**

Combination Scale Factor: **0.99999754**

Monument Type: Point occupied is a 1/2" rebar driven flush with the ground, south of the actual station and approximately 6ft west of concrete sidewalk.



This document was prepared by DCI and GBC for use by Tama County, Iowa.