

**Tama County, Iowa**  
Iowa North Zone (1401)  
Horiz. Datum: NAD83(NSRS2007)  
Vert. Datum: NAVD 1988  
US Survey Feet  
**2007**

Point Name: **52**

**Designation:** 2007-052 Tama Co GPS Control Pt

Northing: **3428754.34**sft    Easting: **5216441.36**sft

Orthometric Height: **873.18**sft    Ellipsoid Height: **768.91**sft    **Geoid03**

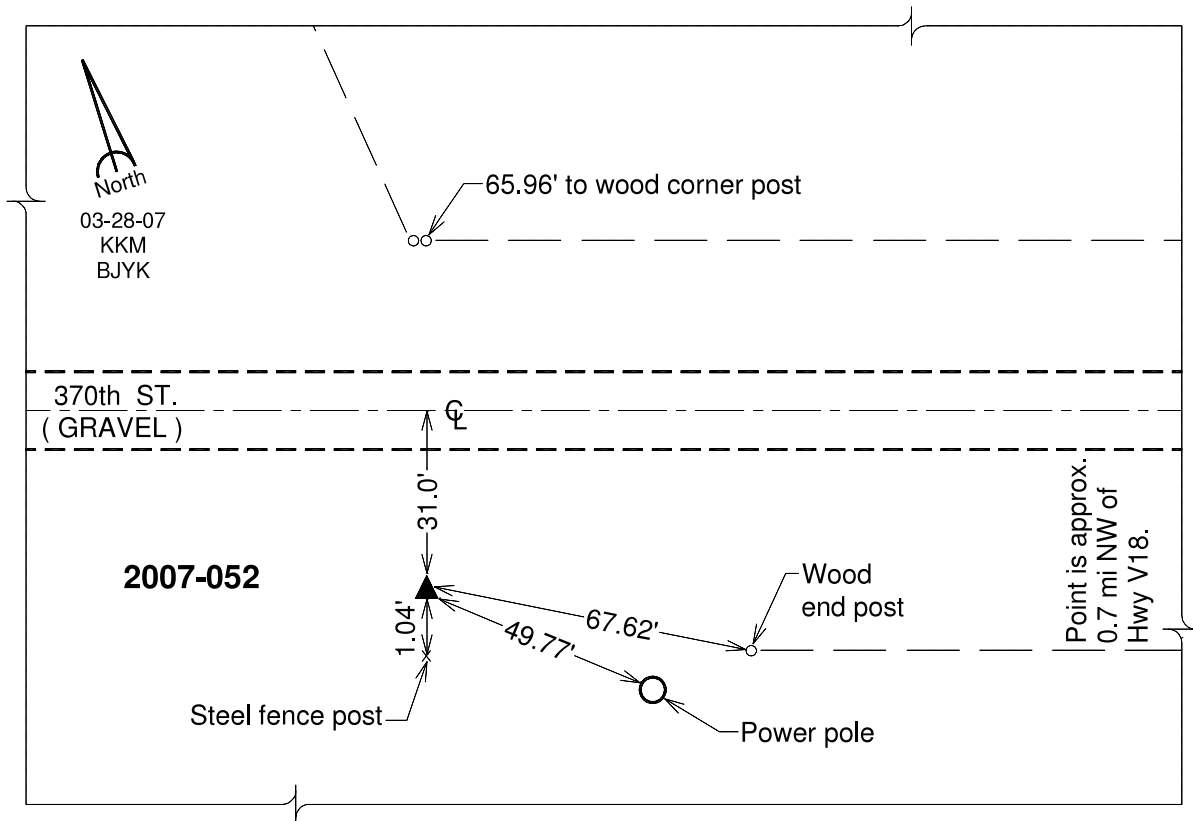
Latitude: **41°54'02.54335"N**

Longitude: **92°24'56.55101"W**

Mapping Angle: **0°44'06"**

Combination Scale Factor: **0.99999757**

**Monument Type:** Berntsen 3/4" Top Security Rod Monument with a 2-1/2" dia. domed survey cap and permanent magnet encased in a white PVC pipe with a NGS style alum. access cover.



*This document was prepared by DCI and GBC for use by Tama County, Iowa.*