

Tama County, Iowa
 Iowa North Zone (1401)
 Horiz. Datum: NAD83(NSRS2007)
 Vert. Datum: NAVD 1988
 US Survey Feet
2007

Point Name: **53**

Designation: 2007-053 Tama Co GPS Control Pt

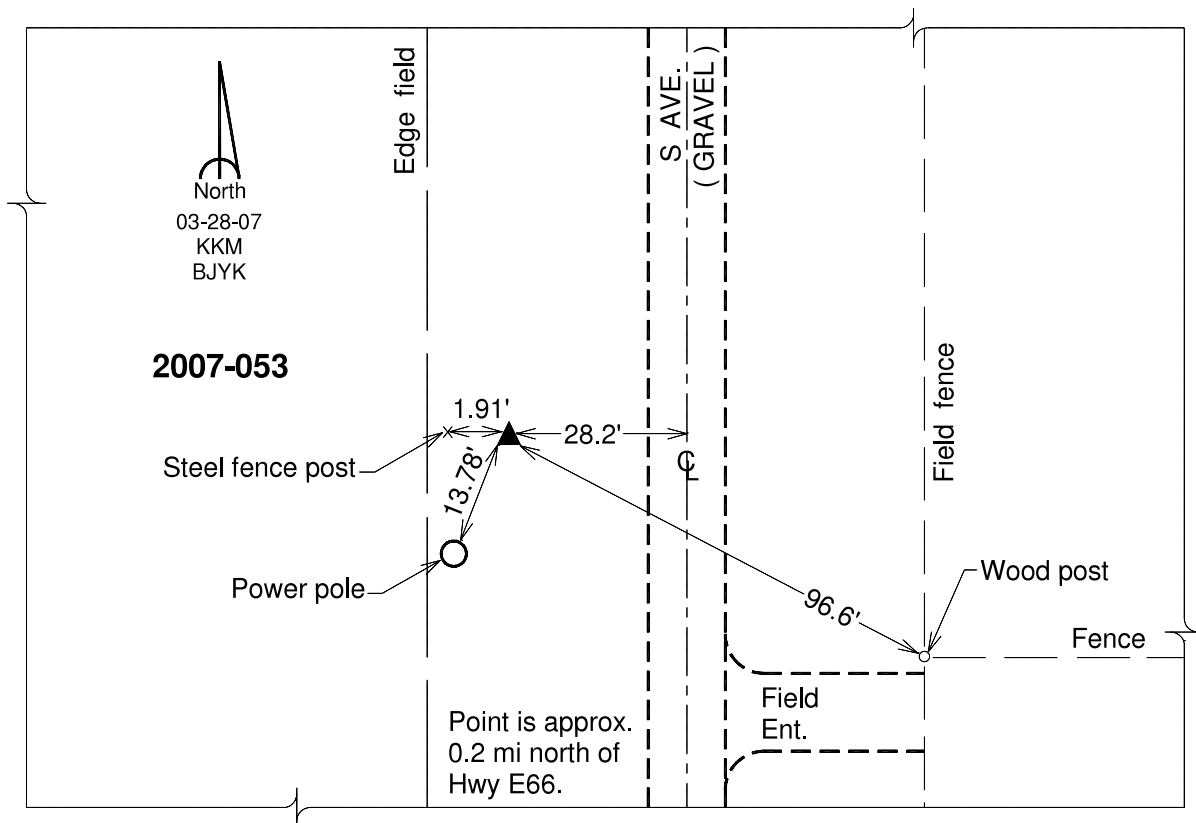
Northing: **3446015.14**sft Easting: **5216218.17**sft

Orthometric Height: **836.01**sft Ellipsoid Height: **732.01**sft **Geoid03**

Latitude: **41°56'53.07277"N** Longitude: **92°24'56.57471"W**

Mapping Angle: **0°44'06"** Combination Scale Factor: **0.99998871**

Monument Type: Berntsen 3/4" Top Security Rod Monument with a 2-1/2" dia. domed survey cap and permanent magnet encased in a white PVC pipe with a NGS style alum. access cover.



This document was prepared by DCI and GBC for use by Tama County, Iowa.