

**Tama County, Iowa**  
 Iowa North Zone (1401)  
 Horiz. Datum: NAD83(NSRS2007)  
 Vert. Datum: NAVD 1988  
 US Survey Feet  
**2007**

Point Name: **56**

**Designation:** 2007-056 Tama Co GPS Control Pt

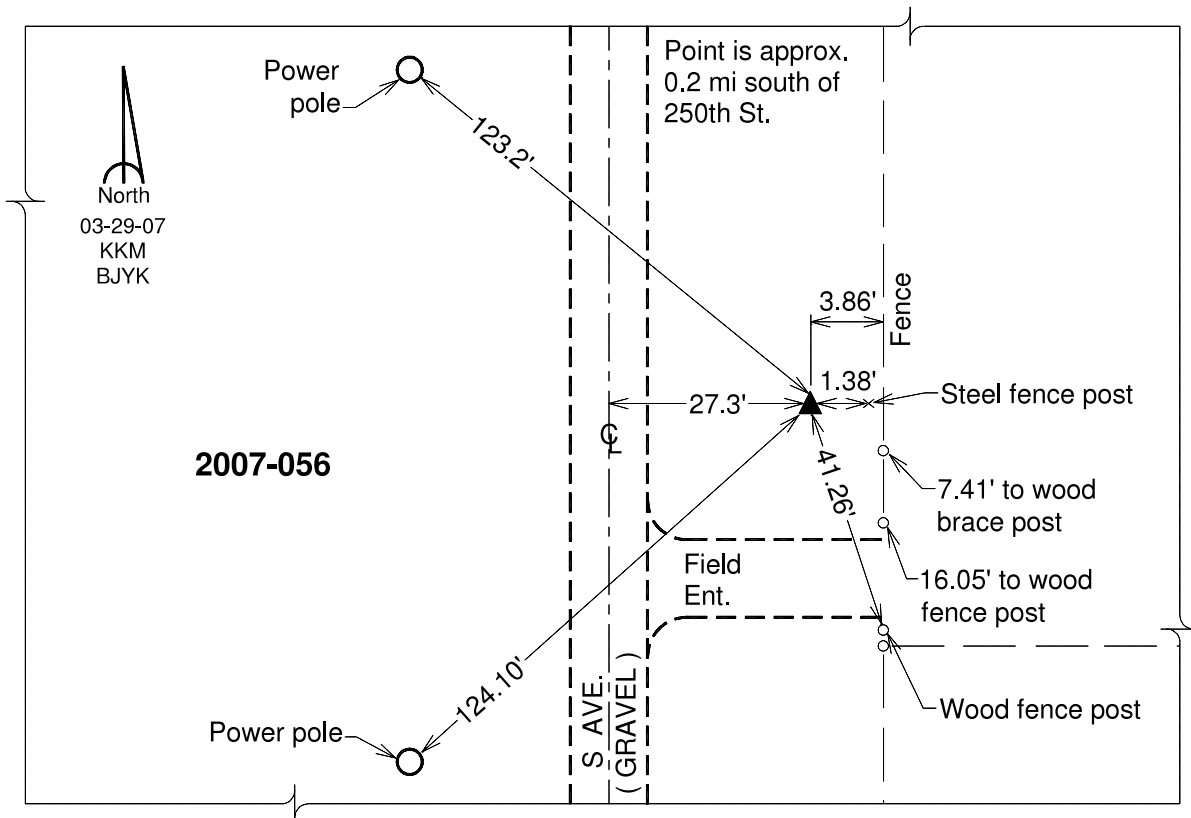
Northing: **3492546.46**sft Easting: **5215604.22**sft

Orthometric Height: **884.94**sft Ellipsoid Height: **781.70**sft **Geoid03**

Latitude: **42°04'32.78526"N** Longitude: **92°24'56.80155"W**

Mapping Angle: **0°44'05"** Combination Scale Factor: **0.99996106**

**Monument Type:** Berntsen 3/4" Top Security Rod Monument with a 2-1/2" dia. domed survey cap and permanent magnet encased in a white PVC pipe with a NGS style alum. access cover.



*This document was prepared by DCI and GBC for use by Tama County, Iowa.*