

Tama County, Iowa
 Iowa North Zone (1401)
 Horiz. Datum: NAD83(NSRS2007)
 Vert. Datum: NAVD 1988
 US Survey Feet
2007

Point Name: **58**

Designation: 2007-058 Tama Co GPS Control Pt

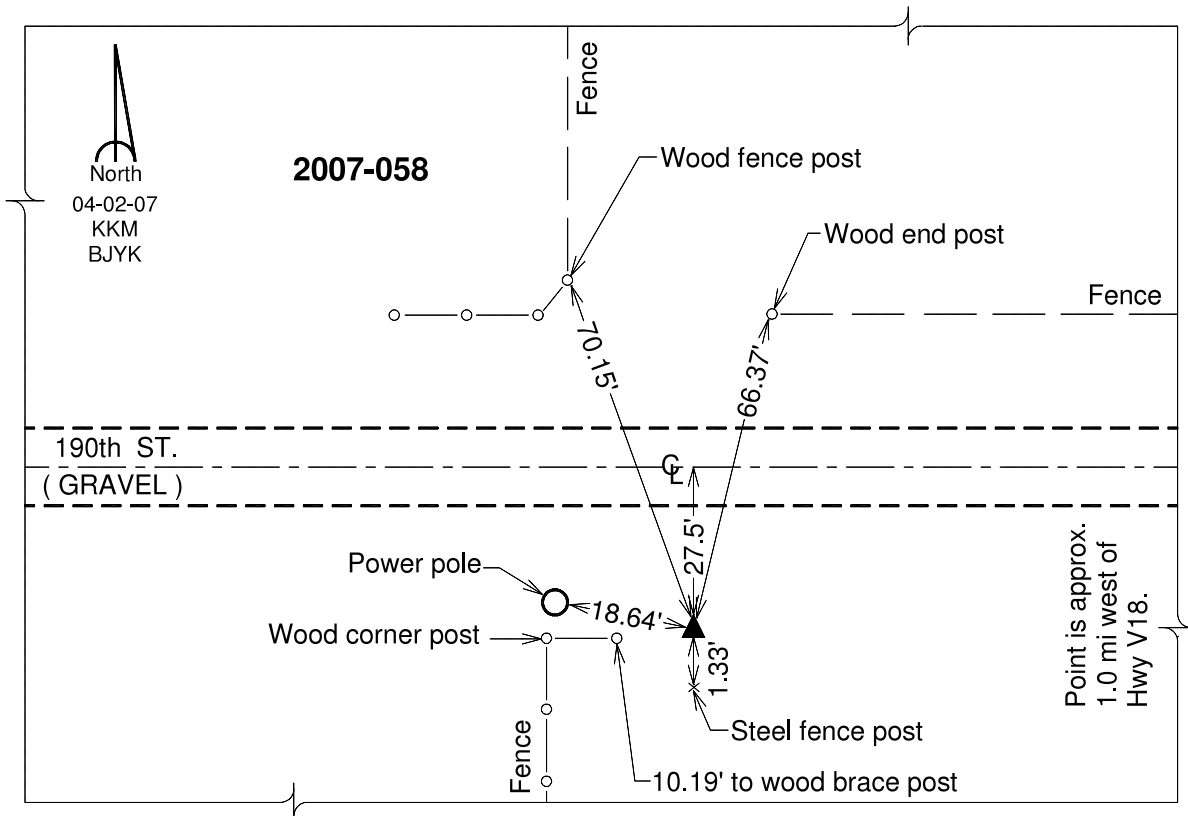
Northing: **3525730.03**sft Easting: **5214991.88**sft

Orthometric Height: **931.68**sft Ellipsoid Height: **828.77**sft **Geoid03**

Latitude: **42°10'00.64926"N** Longitude: **92°24'59.28096"W**

Mapping Angle: **0°44'04"** Combination Scale Factor: **0.99994378**

Monument Type: Berntsen 3/4" Top Security Rod Monument with a 2-1/2" dia. domed survey cap and permanent magnet encased in a white PVC pipe with a NGS style alum. access cover.



This document was prepared by DCI and GBC for use by Tama County, Iowa.