

**Tama County, Iowa**  
 Iowa North Zone (1401)  
 Horiz. Datum: NAD83(NSRS2007)  
 Vert. Datum: NAVD 1988  
 US Survey Feet  
**2007**

Point Name: **6**

**Designation:** 2007-006 Tama Co GPS Control Pt

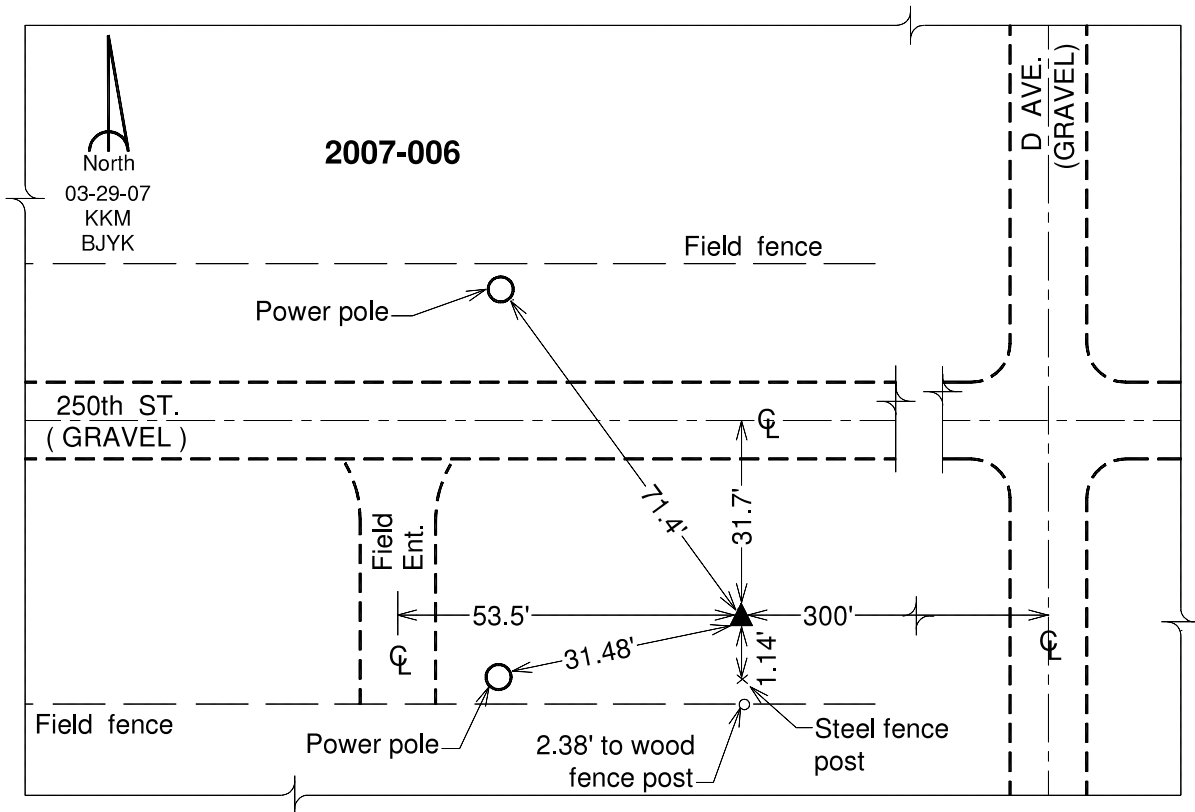
Northing: **3492738.32**sft Easting: **5135808.80**sft

Orthometric Height: **974.54**sft Ellipsoid Height: **870.56**sft **Geoid03**

Latitude: **42°04'43.41996"N** Longitude: **92°42'34.80853"W**

Mapping Angle: **0°32'08"** Combination Scale Factor: **0.99995629**

**Monument Type:** Berntsen 3/4" Top Security Rod Monument with a 2-1/2" dia. domed survey cap and permanent magnet encased in a white PVC pipe with a NGS style alum. access cover.



*This document was prepared by DCI and GBC for use by Tama County, Iowa.*