

Tama County, Iowa
Iowa North Zone (1401)
Horiz. Datum: NAD83(NSRS2007)
Vert. Datum: NAVD 1988
US Survey Feet
2007

Point Name: **60**

Designation: 2007-060 Tama Co GPS Control Pt

Northing: **3559585.25**sft Easting: **5214501.37**sft

Orthometric Height: **969.19**sft Ellipsoid Height: **866.28**sft **Geoid03**

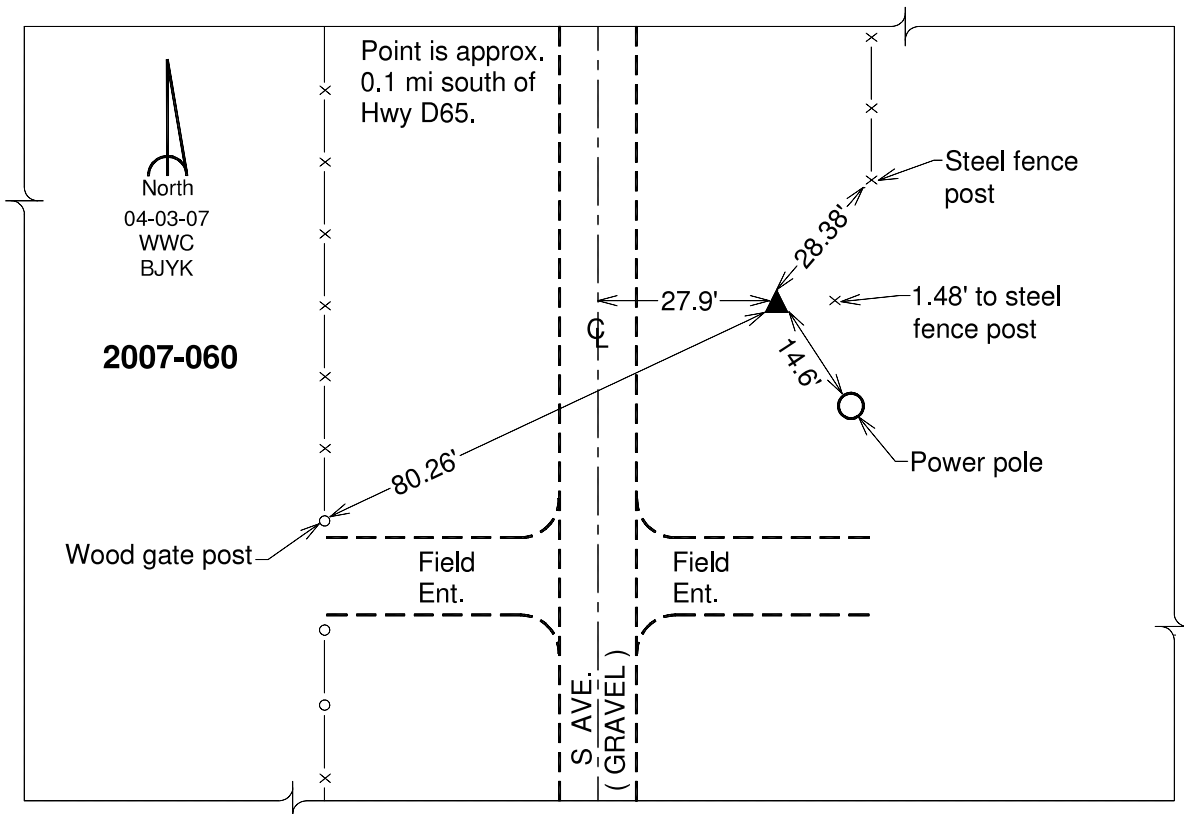
Latitude: **42°15'35.13162"N**

Longitude: **92°25'00.03310"W**

Mapping Angle: **0°44'03"**

Combination Scale Factor: **0.99992923**

Monument Type: Berntsen 3/4" Top Security Rod Monument with a 2-1/2" dia. domed survey cap and permanent magnet encased in a white PVC pipe with a NGS style alum. access cover.



This document was prepared by DCI and GBC for use by Tama County, Iowa.