

**Tama County, Iowa**  
 Iowa North Zone (1401)  
 Horiz. Datum: NAD83(NSRS2007)  
 Vert. Datum: NAVD 1988  
 US Survey Feet  
**2007**

Point Name: **61**

**Designation:** 2007-061 Tama Co GPS Control Pt

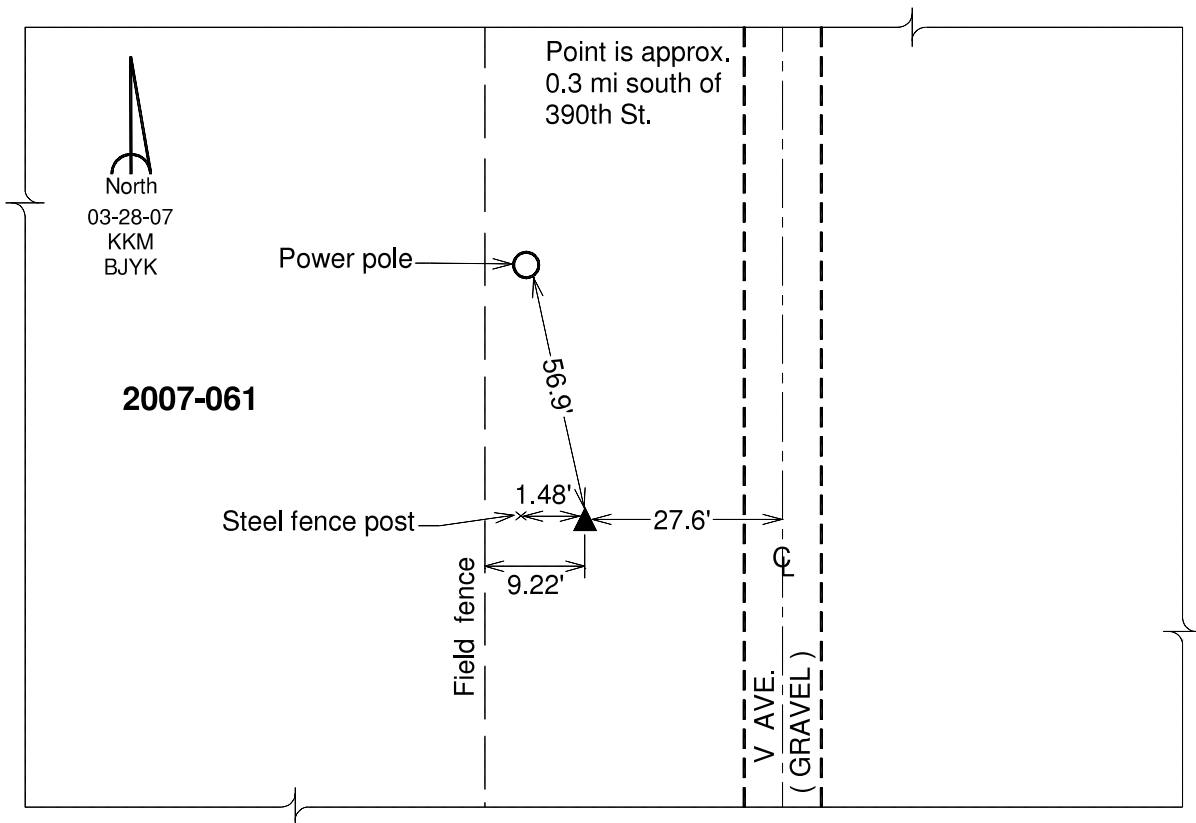
Northing: **3416317.12**sft Easting: **5232787.21**sft

Orthometric Height: **930.43**sft Ellipsoid Height: **826.08**sft **Geoid03**

Latitude: **41°51'57.56241"N** Longitude: **92°21'22.65290"W**

Mapping Angle: **0°46'31"** Combination Scale Factor: **1.00000306**

**Monument Type:** Berntsen 3/4" Top Security Rod Monument with a 2-1/2" dia. domed survey cap and permanent magnet encased in a white PVC pipe with a NGS style alum. access cover.



*This document was prepared by DCI and GBC for use by Tama County, Iowa.*