

Tama County, Iowa
Iowa North Zone (1401)
Horiz. Datum: NAD83(NSRS2007)
Vert. Datum: NAVD 1988
US Survey Feet
2007

Point Name: **63**

Designation: 2007-063 Tama Co GPS Control Pt

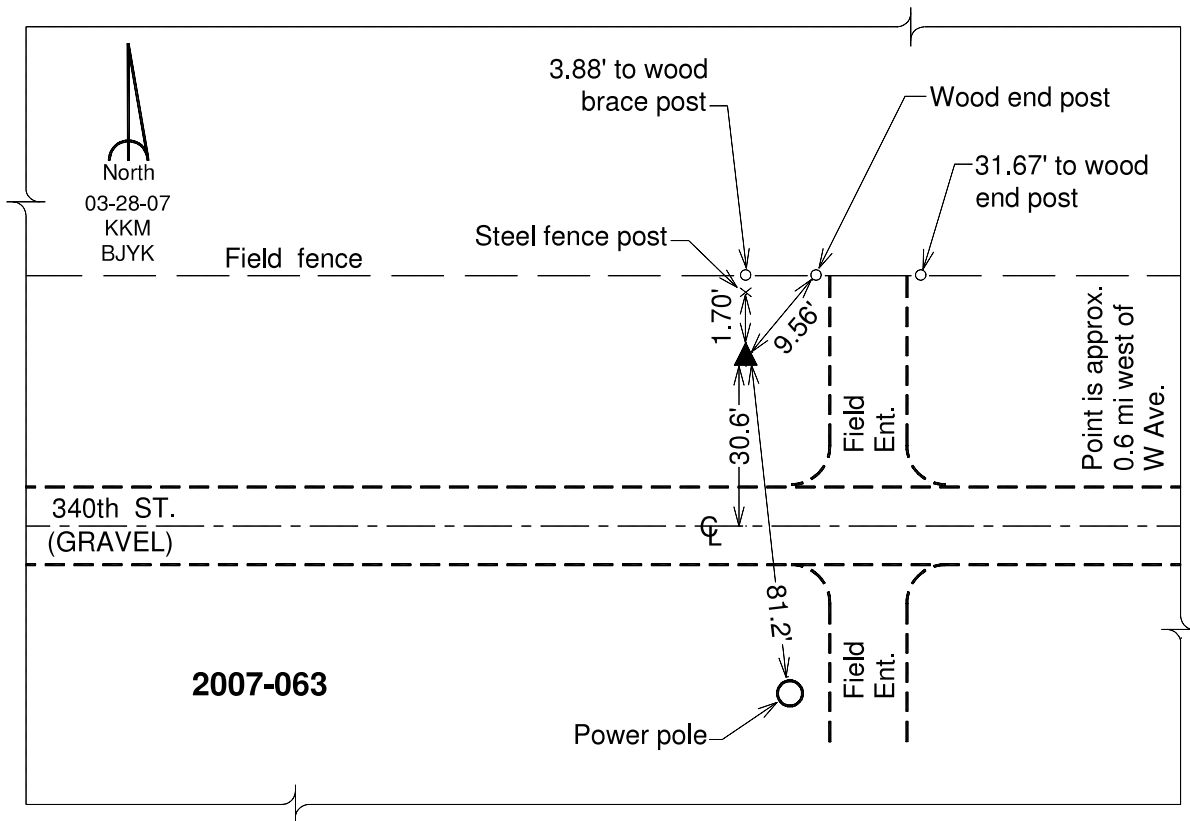
Northing: **3446767.34**sft Easting: **5232703.00**sft

Orthometric Height: **980.66**sft Ellipsoid Height: **876.79**sft **Geoid03**

Latitude: **41°56'58.35588"N** Longitude: **92°21'18.31587"W**

Mapping Angle: **0°46'33"** Combination Scale Factor: **0.99998148**

Monument Type: Berntsen 3/4" Top Security Rod Monument with a 2-1/2" dia. domed survey cap and permanent magnet encased in a white PVC pipe with a NGS style alum. access cover.



This document was prepared by DCI and GBC for use by Tama County, Iowa.