

**Tama County, Iowa**  
Iowa North Zone (1401)  
Horiz. Datum: NAD83(NSRS2007)  
Vert. Datum: NAVD 1988  
US Survey Feet  
**2007**

Point Name: **65**

**Designation:** 2007-065 Tama Co GPS Control Pt

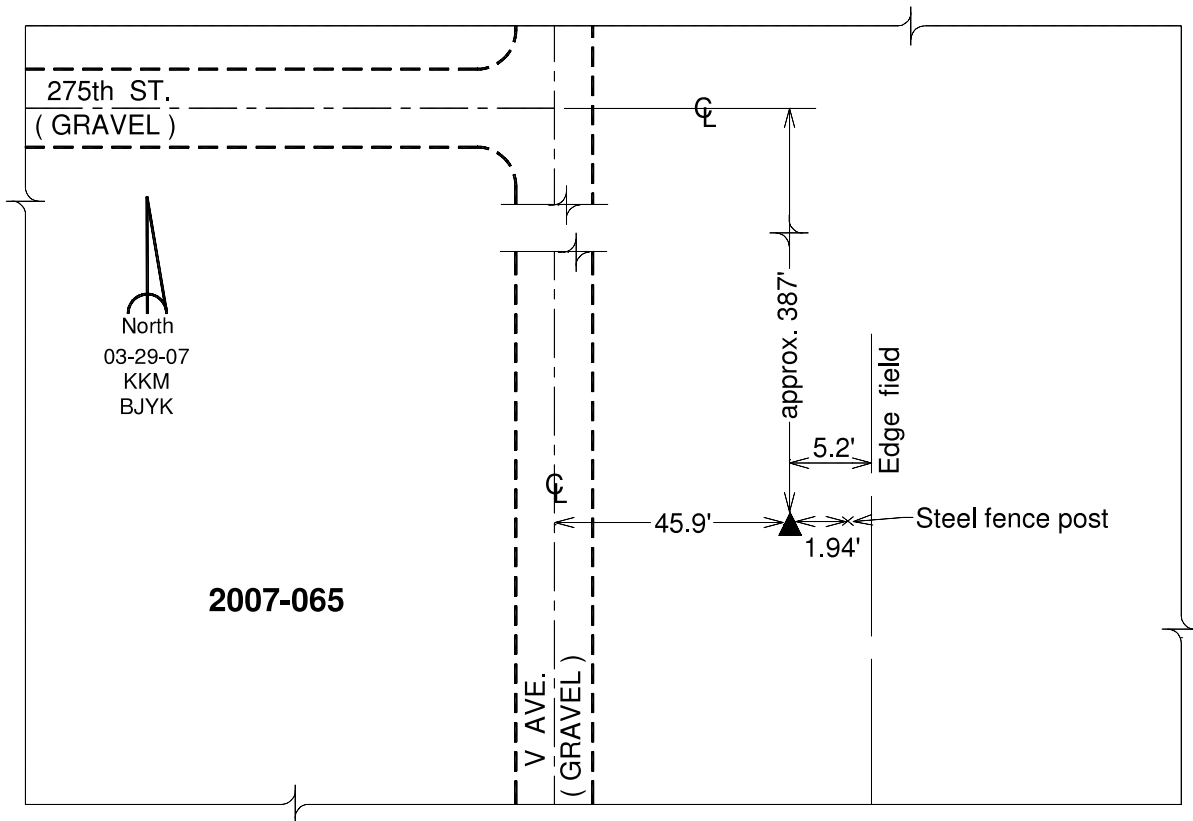
Northing: **3479136.14**sft    Easting: **5231851.61**sft

Orthometric Height: **821.35**sft    Ellipsoid Height: **718.04**sft    **Geoid03**

Latitude: **42°02'18.20444"N**                      Longitude: **92°21'23.78831"W**

Mapping Angle: **0°46'30"**                      Combination Scale Factor: **0.99997099**

**Monument Type:** Berntsen 3/4" Top Security Rod Monument with a 2-1/2" dia. domed survey cap and permanent magnet encased in a white PVC pipe with a NGS style alum. access cover.



*This document was prepared by DCI and GBC for use by Tama County, Iowa.*