

**Tama County, Iowa**  
Iowa North Zone (1401)  
Horiz. Datum: NAD83(NSRS2007)  
Vert. Datum: NAVD 1988  
US Survey Feet  
**2007**

Point Name: **68**

**Designation:** 2007-068 Tama Co GPS Control Pt

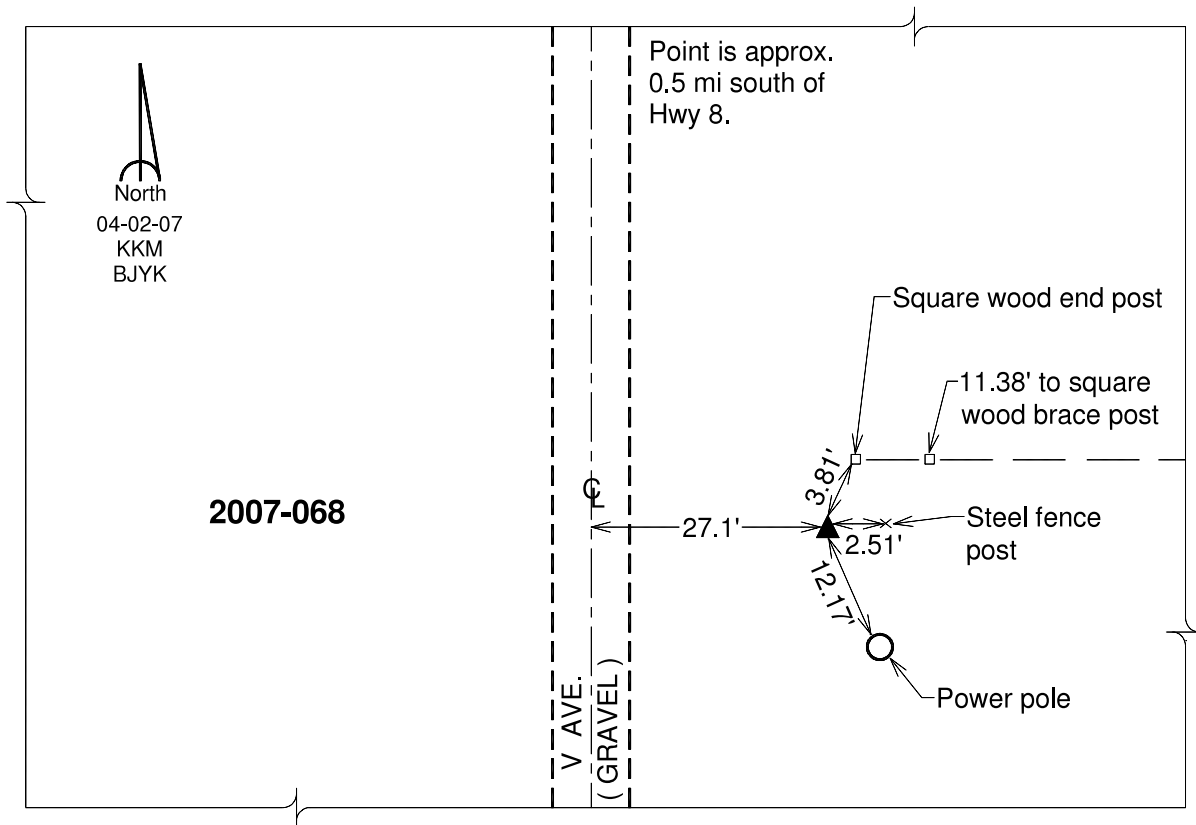
Northing: **3528361.71**sft Easting: **5230919.19**sft

Orthometric Height: **978.83**sft Ellipsoid Height: **876.03**sft **Geoid03**

Latitude: **42°10'24.57344"N** Longitude: **92°21'27.32857"W**

Mapping Angle: **0°46'27"** Combination Scale Factor: **0.99994053**

**Monument Type:** Berntsen 3/4" Top Security Rod Monument with a 2-1/2" dia. domed survey cap and permanent magnet encased in a white PVC pipe with a NGS style alum. access cover.



*This document was prepared by DCI and GBC for use by Tama County, Iowa.*