

Tama County, Iowa
 Iowa North Zone (1401)
 Horiz. Datum: NAD83(NSRS2007)
 Vert. Datum: NAVD 1988
 US Survey Feet
2007

Point Name: **71**

Designation: 2007-071 Tama Co GPS Control Pt

Northing: **3571700.30**sft Easting: **5122107.37**sft

Orthometric Height: **1046.27**sft Ellipsoid Height: **941.69**sft **Geoid03**

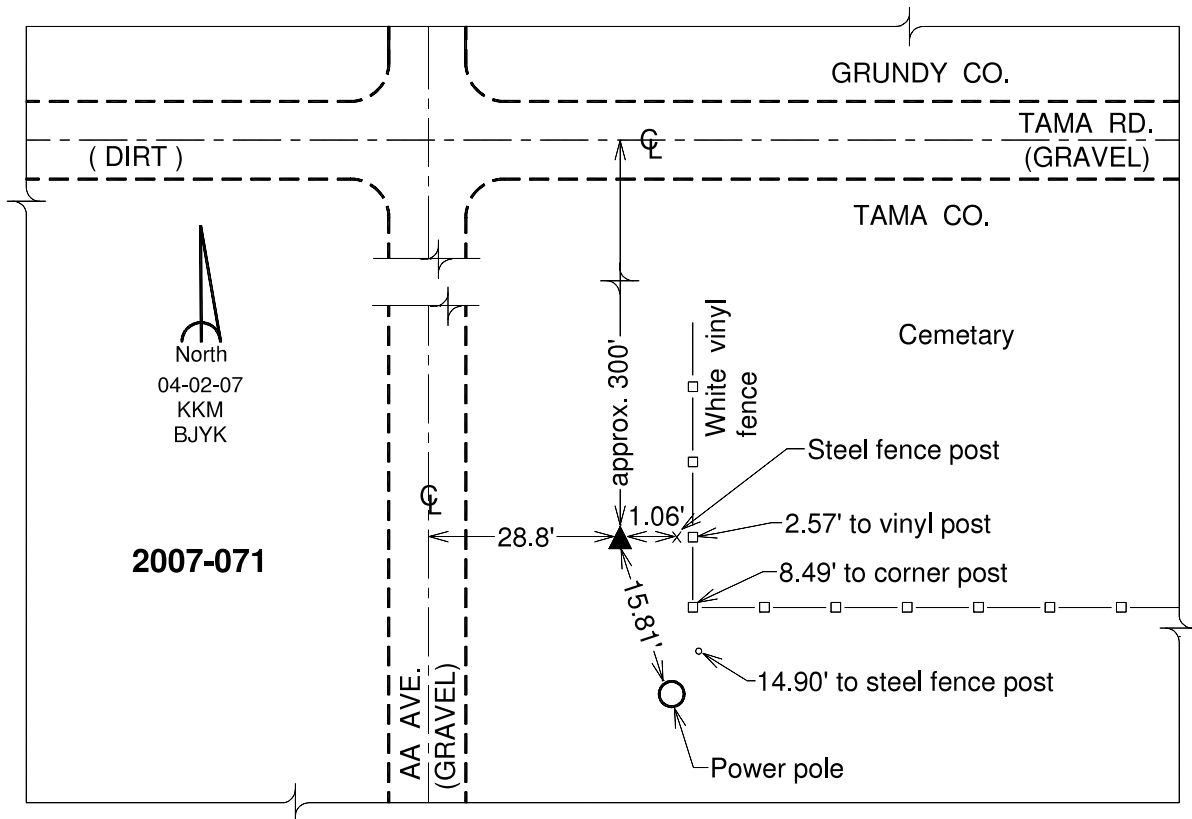
Latitude: **42°17'44.66210"N**

Longitude: **92°45'27.29375"W**

Mapping Angle: **0°30'11"**

Combination Scale Factor: **0.99992139**

Monument Type: Berntsen 3/4" Top Security Rod Monument with a 2-1/2" dia. domed survey cap and permanent magnet encased in a white PVC pipe with a NGS style alum. access cover.



This document was prepared by DCI and GBC for use by Tama County, Iowa.