

Tama County, Iowa
 Iowa North Zone (1401)
 Horiz. Datum: NAD83(NSRS2007)
 Vert. Datum: NAVD 1988
 US Survey Feet
2007

Point Name: **8**

Designation: 2007-008 Tama Co GPS Control Pt

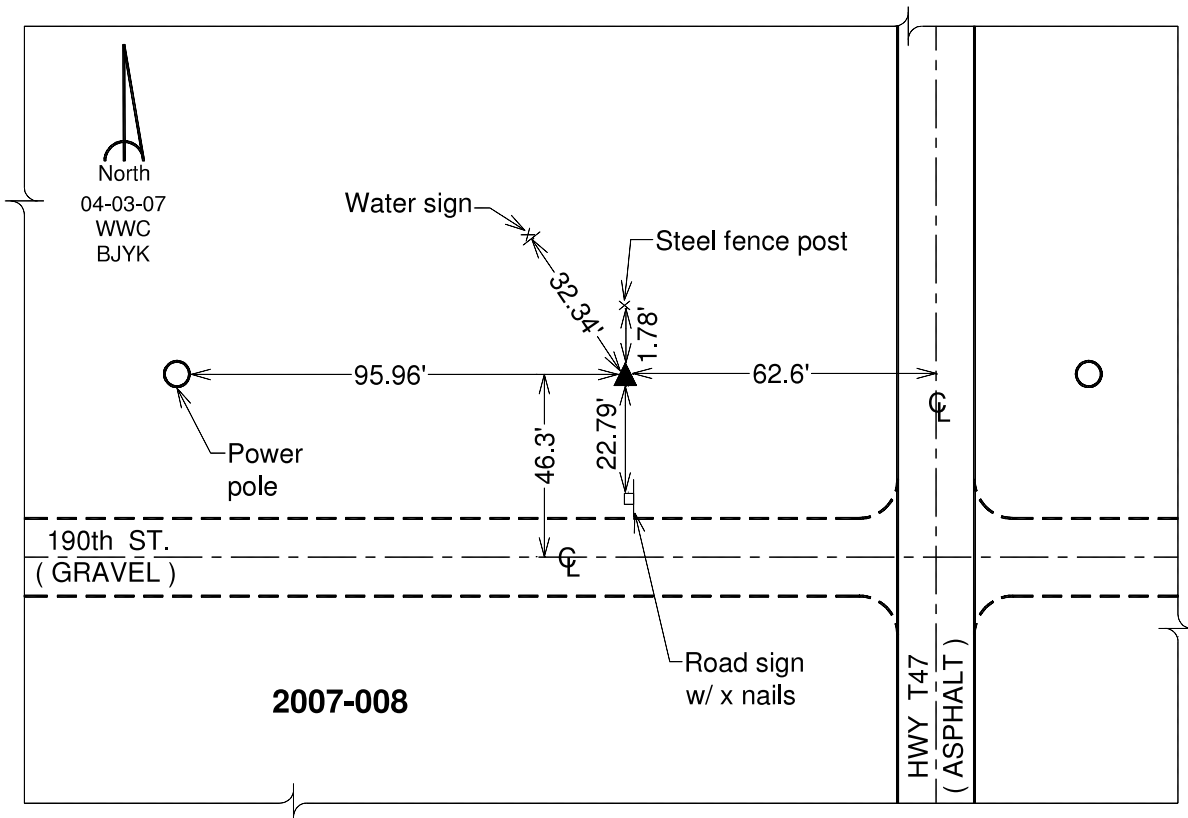
Northing: **3524887.22**sft Easting: **5135705.04**sft

Orthometric Height: **1032.24**sft Ellipsoid Height: **928.13**sft **Geoid03**

Latitude: **42°10'01.00780"N** Longitude: **92°42'32.19537"W**

Mapping Angle: **0°32'10"** Combination Scale Factor: **0.99993903**

Monument Type: Berntsen 3/4" Top Security Rod Monument with a 2-1/2" dia. domed survey cap and permanent magnet encased in a white PVC pipe with a NGS style alum. access cover.



This document was prepared by DCI and GBC for use by Tama County, Iowa.