

Tama County, Iowa
 Iowa North Zone (1401)
 Horiz. Datum: NAD83(NSRS2007)
 Vert. Datum: NAVD 1988
 US Survey Feet
2007

Point Name: **9**

Designation: 2007-009 Tama Co GPS Control Pt

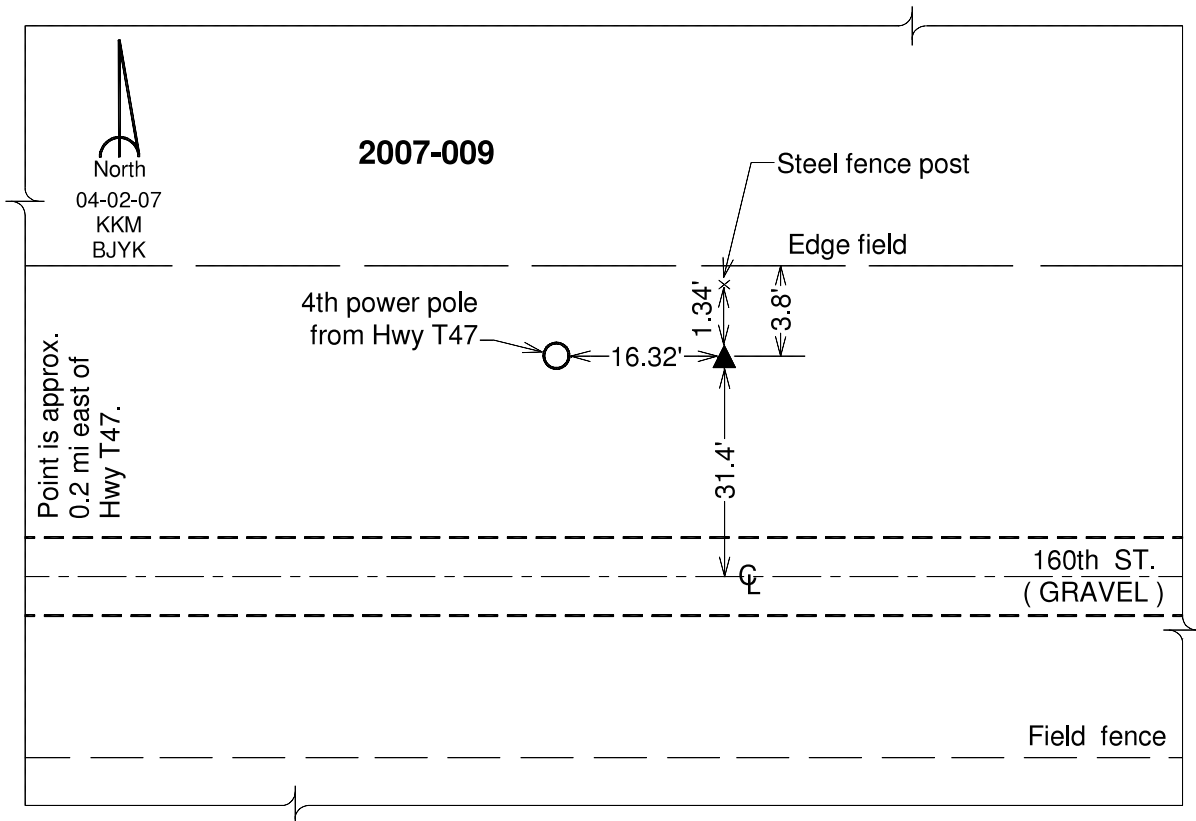
Northing: **3540708.84**sft Easting: **5136478.45**sft

Orthometric Height: **1021.27**sft Ellipsoid Height: **917.03**sft **Geoid03**

Latitude: **42°12'37.22749"N** Longitude: **92°42'19.95135"W**

Mapping Angle: **0°32'18"** Combination Scale Factor: **0.99993327**

Monument Type: Berntsen 3/4" Top Security Rod Monument with a 2-1/2" dia. domed survey cap and permanent magnet encased in a white PVC pipe with a NGS style alum. access cover.



This document was prepared by DCI and GBC for use by Tama County, Iowa.