

Taylor County, Iowa
Iowa South Zone (1402)
Horiz. Datum: **NAD83(NA2011)**
Vert. Datum: NAVD 1988
US Survey Feet
2013

Point Name: **1001**

Designation: 2009-001 Taylor Co GPS Control Pt (Set by DCI in 2009)

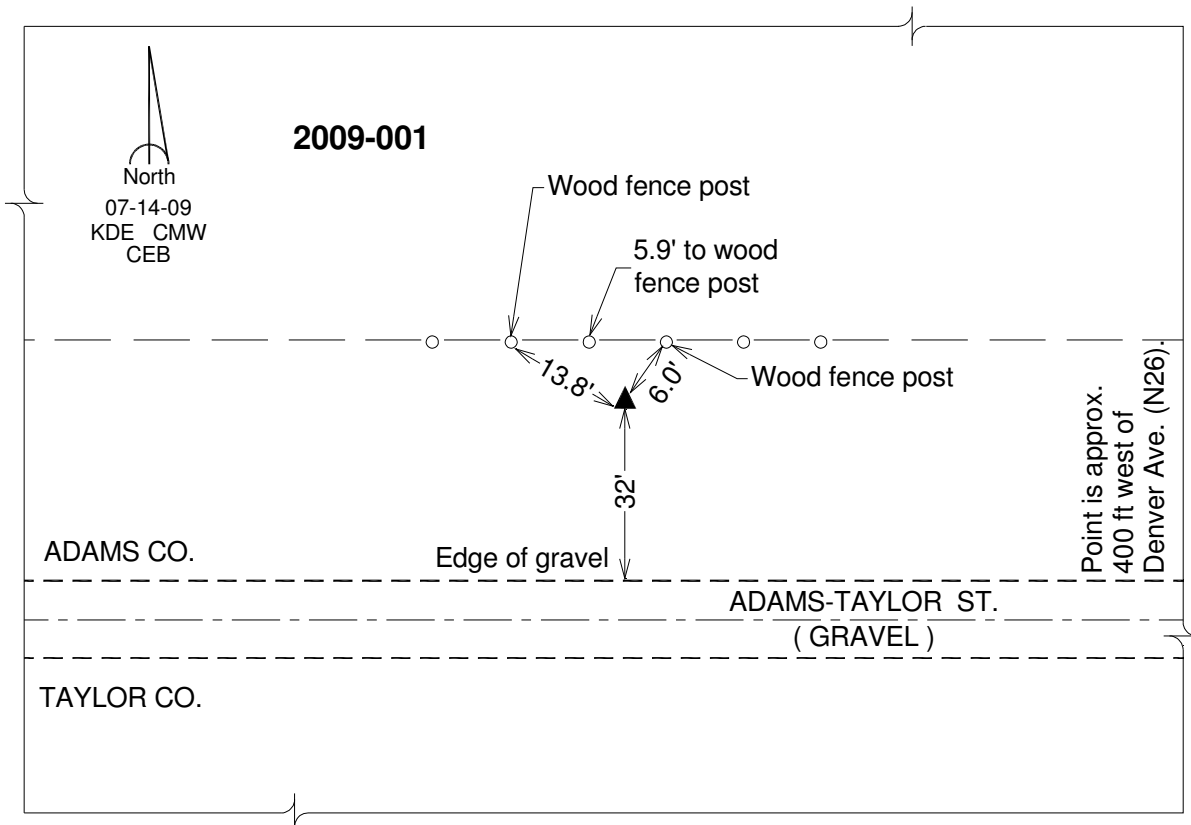
Northing: **331158.61**sft Easting: **1260775.82**sft

Orthometric Height: **1148.05**sft Ellipsoid Height: **1047.00**sft **Geoid12A**

Latitude: **N40°54'02.60861"** Longitude: **W94°52'24.21853"**

Mapping Angle: **-0°54'17"** Combination Scale Factor: **0.999912060**

Monument Type: Berntsen 3/4" Top Security Rod Monument with a 2-1/2" dia. domed survey cap and permanent magnet encased in a white PVC pipe with a NGS style alum. access cover.



This document was prepared by DCI on 04-17-2013 for use by Taylor County, Iowa.