

Taylor County, Iowa
Iowa South Zone (1402)
Horiz. Datum: **NAD83(NA2011)**
Vert. Datum: NAVD 1988
US Survey Feet
2013

Point Name: **1005**

Designation: 2009-005 Taylor Co GPS Control Pt (Set by DCI in 2009)

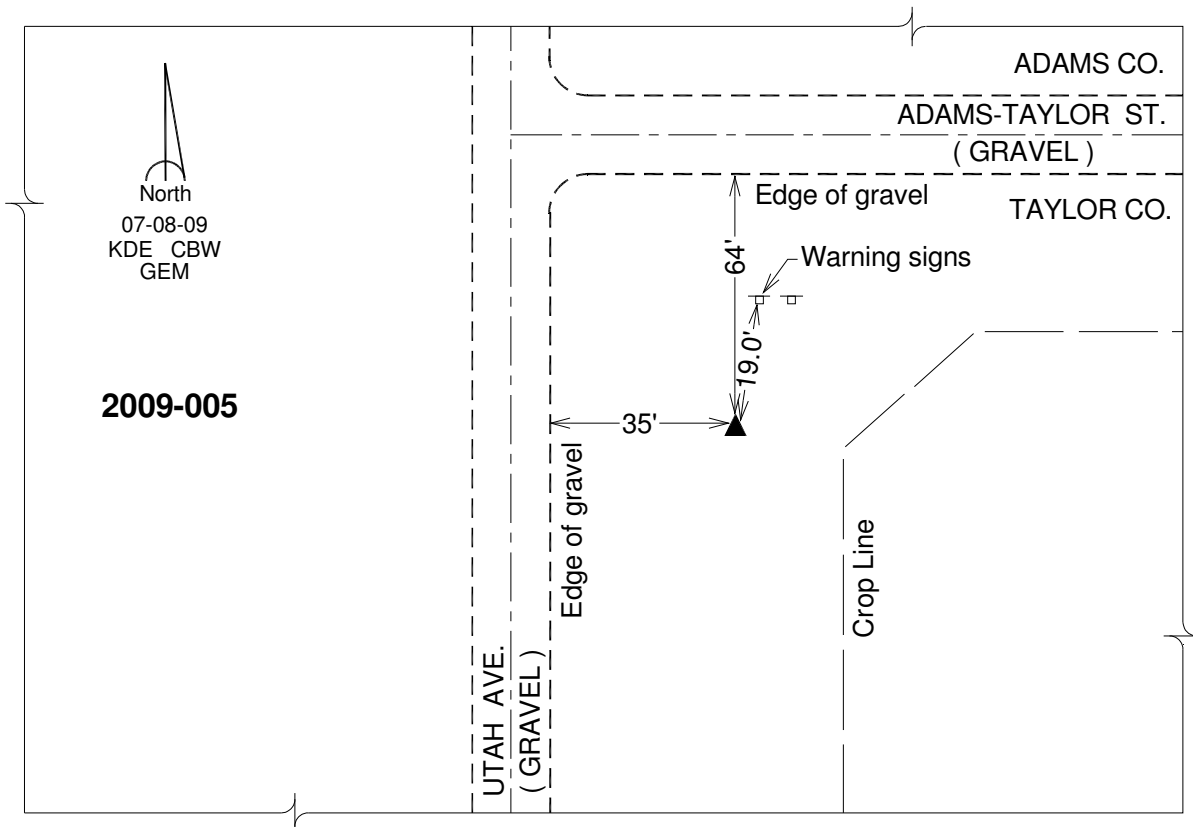
Northing: **329326.92sft** Easting: **1351110.80sft**

Orthometric Height: **1251.49sft** Ellipsoid Height: **1150.06sft** **Geoid12A**

Latitude: **N40°53'56.92745"** Longitude: **W94°32'47.59335"**

Mapping Angle: **-0°41'22"** Combination Scale Factor: **0.999907286**

Monument Type: Berntsen 3/4" Top Security Rod Monument with a 2-1/2" dia. domed survey cap and permanent magnet encased in a white PVC pipe with a NGS style alum. access cover.



This document was prepared by DCI on 04-17-2013 for use by Taylor County, Iowa.