

Taylor County, Iowa
 Iowa South Zone (1402)
 Horiz. Datum: **NAD83(NA2011)**
 Vert. Datum: NAVD 1988
 US Survey Feet
2013

Point Name: **1006**

Designation: 2009-006 Taylor Co GPS Control Pt (Set by DCI in 2009)

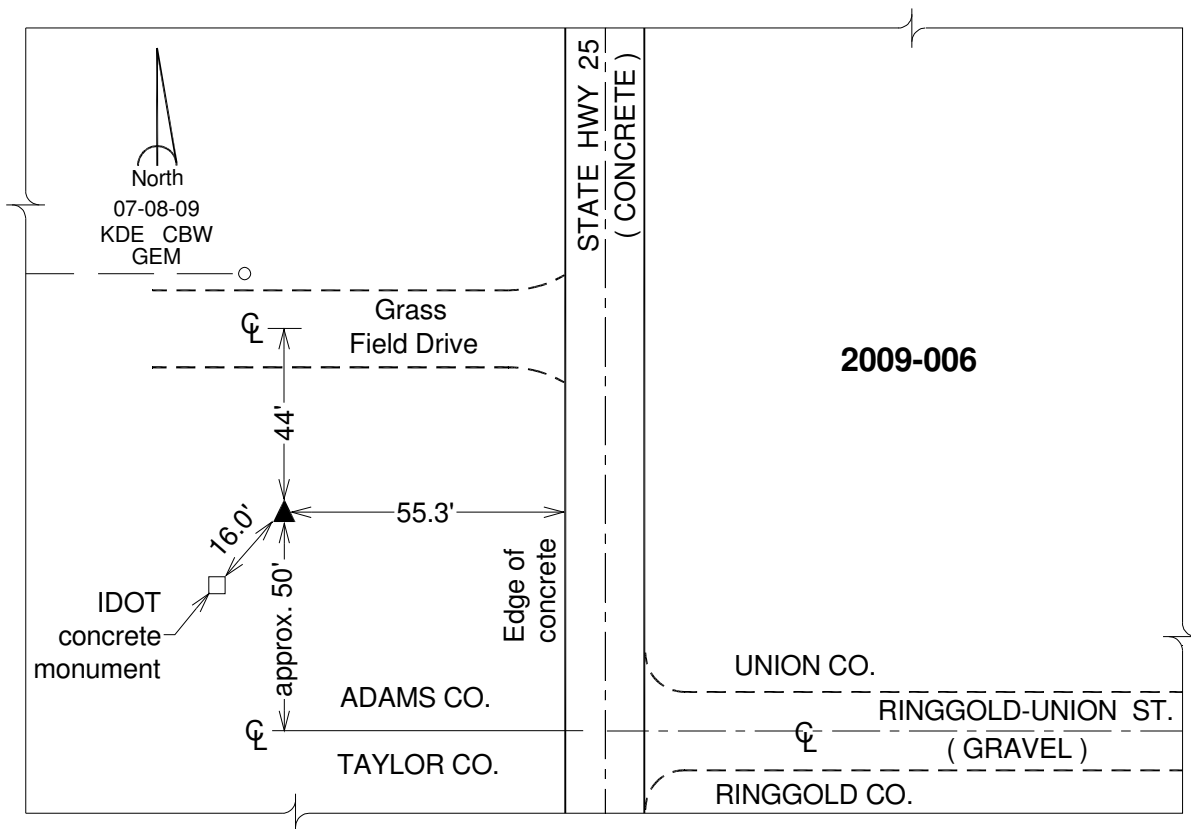
Northing: **329154.84**sft Easting: **1371984.10**sft

Orthometric Height: **1238.60**sft Ellipsoid Height: **1137.08**sft **Geoid12A**

Latitude: **N40°53'57.61919"** Longitude: **W94°28'15.76148"**

Mapping Angle: **-0°38'23"** Combination Scale Factor: **0.999907888**

Monument Type: Berntsen 3/4" Top Security Rod Monument with a 2-1/2" dia. domed survey cap and permanent magnet encased in a white PVC pipe with a NGS style alum. access cover.



This document was prepared by DCI on 04-17-2013 for use by Taylor County, Iowa.