

**Taylor County, Iowa**  
Iowa South Zone (1402)  
Horiz. Datum: **NAD83(NA2011)**  
Vert. Datum: NAVD 1988  
US Survey Feet  
**2013**

Point Name: **1013**

**Designation:** 2009-013 Taylor Co GPS Control Pt (Set by DCI in 2009)

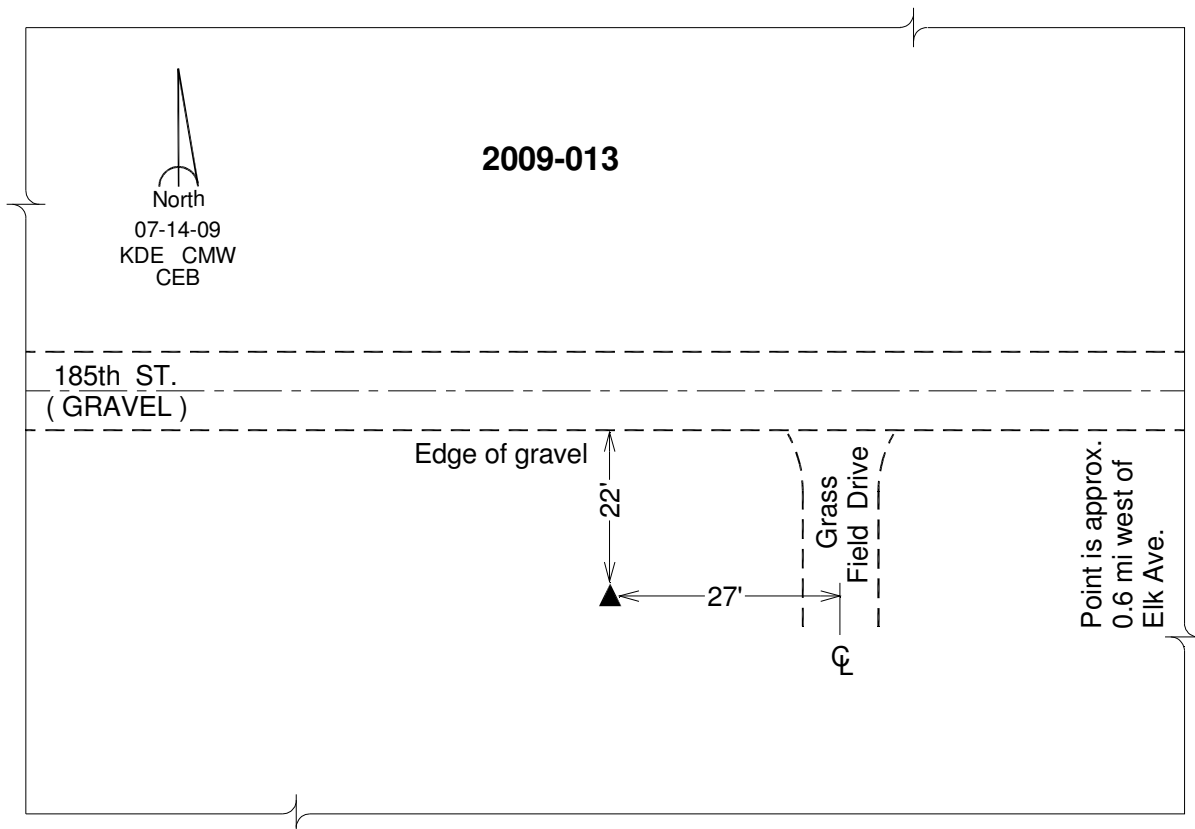
Northing: **286253.46**sft    Easting: **1265492.41**sft

Orthometric Height: **1200.16**sft    Ellipsoid Height: **1098.50**sft                      **Geoid12A**

Latitude: **N40°46'39.67627"**                      Longitude: **W94°51'13.70111"**

Mapping Angle: **-0°53'30"**                      Combination Scale Factor: **0.999923067**

**Monument Type:** Berntsen 3/4" Top Security Rod Monument with a 2-1/2" dia. domed survey cap and permanent magnet encased in a white PVC pipe with a NGS style alum. access cover.



*This document was prepared by DCI on 04-17-2013 for use by Taylor County, Iowa.*